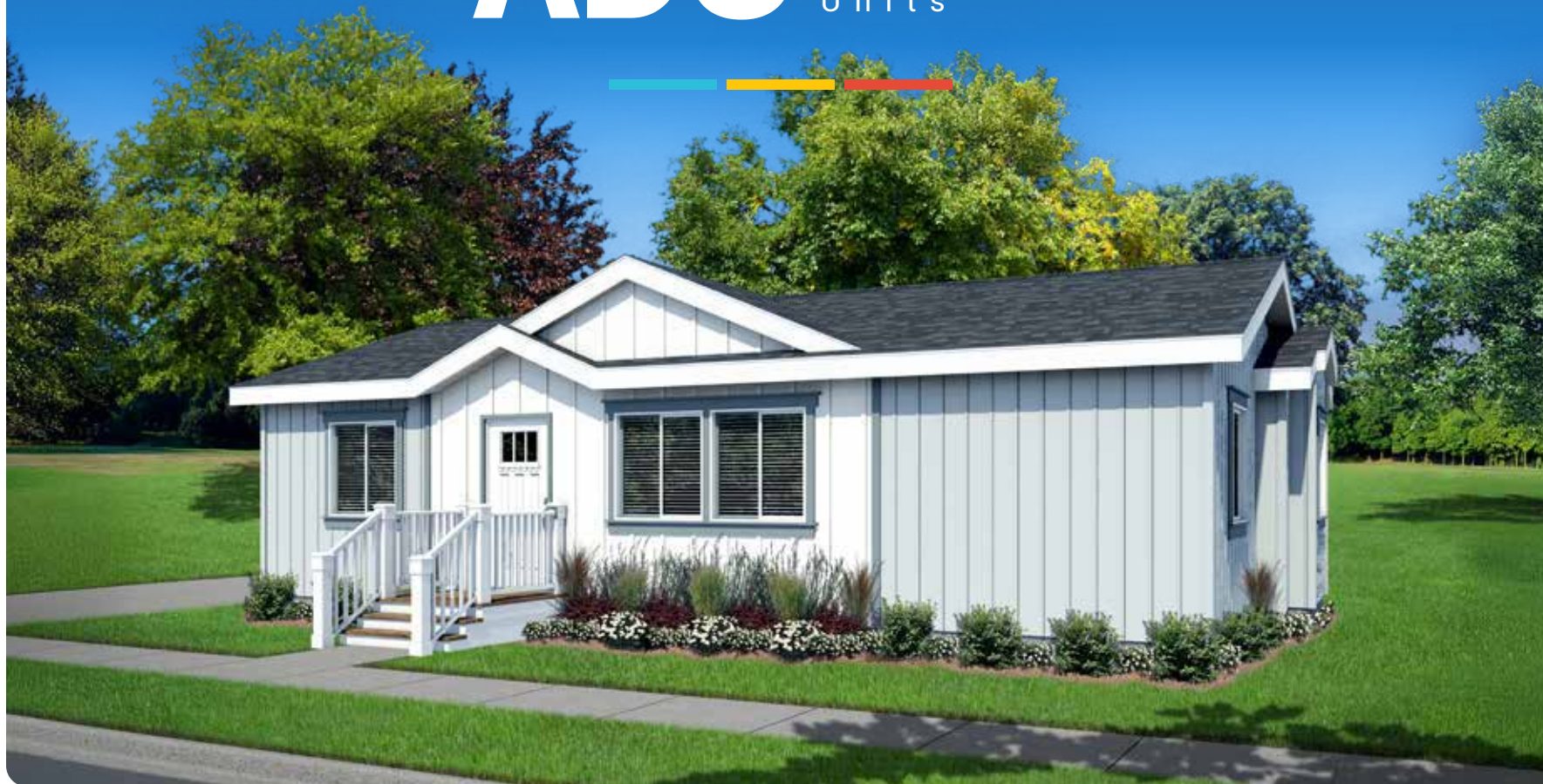


ADU

Accessory
Dwelling
Units



CUSTOM LIVING
MANUFACTURED HOMES

ADU

Accessory
Dwelling
Units



At Skyline Homes, we don't just build homes, we build dreams.

ADUs are becoming more popular because they are versatile. An ADU can serve as a private living space for a young adult returning from college, home for an elderly parent who needs to be closer to family, a home office, guest house, or possibly a home for rental income.

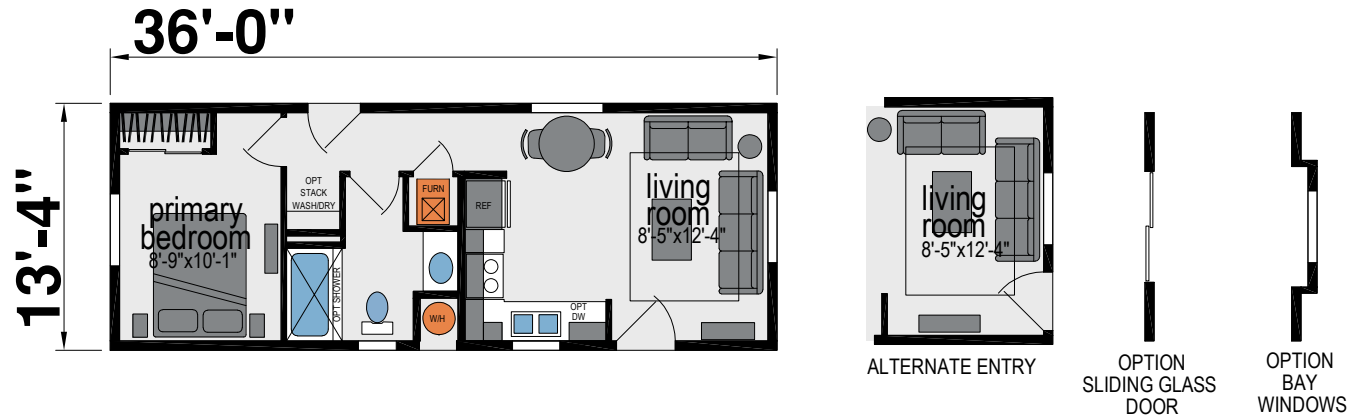
We design and build our ADUs with people in mind. From innovative and flexible designs, we are committed to providing features and finishes that can be enjoyed for a lifetime. We promise you will feel the difference of a Skyline Home. It's the feeling of comfort. A place you call home.



K610J

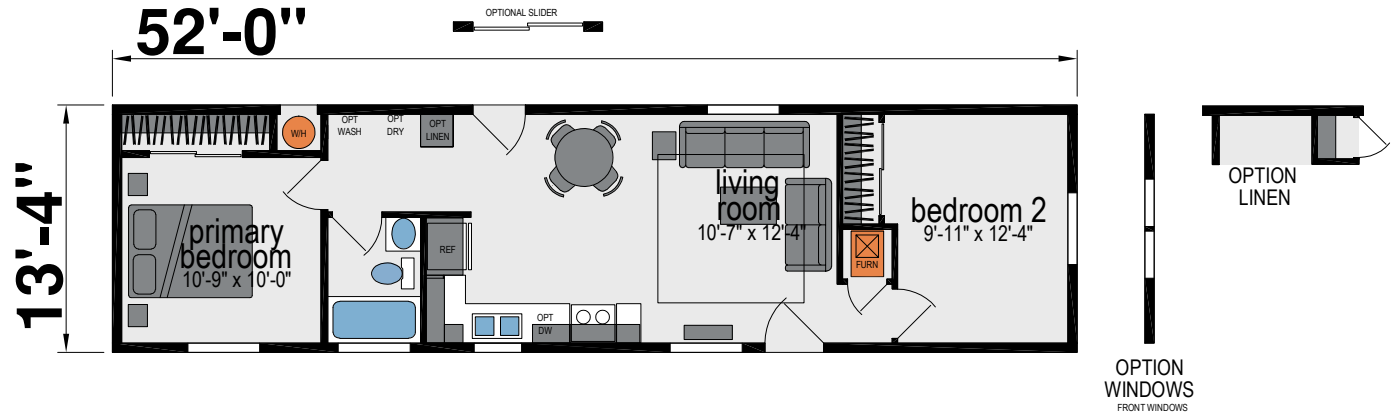
E517J

One Bed | One Bath | 479 Sq. Ft.



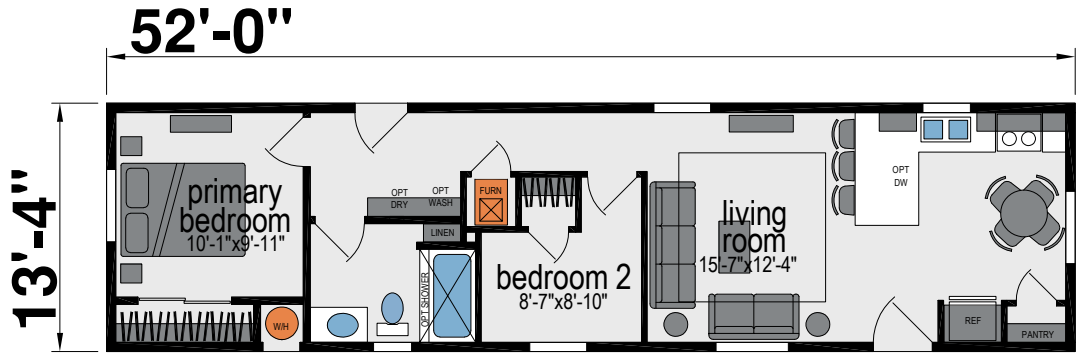
E505J

Two Bed | One Bath | 693 Sq. Ft.



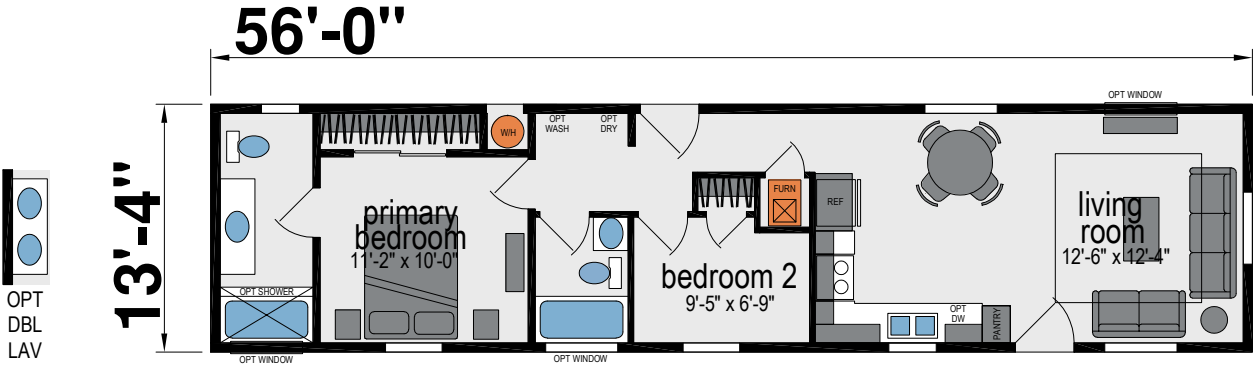
E502J

Two Bed | One Bath | 693 Sq. Ft.



E540J

Two Bed | Two Bath | 746 Sq. Ft.



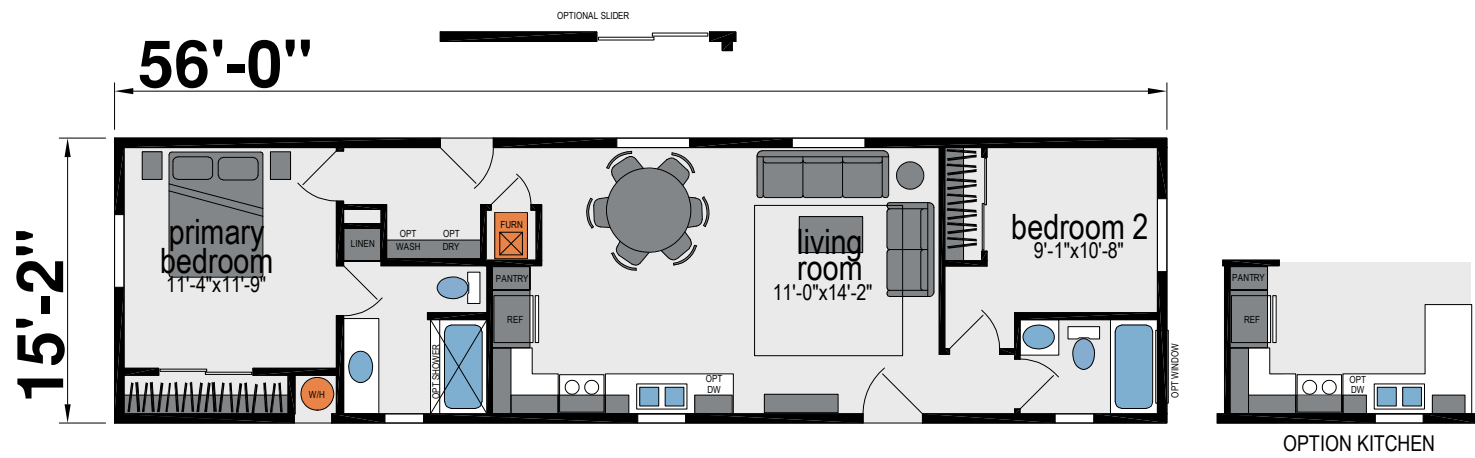
K200J

One Bed | One Bath | 667 Sq. Ft.



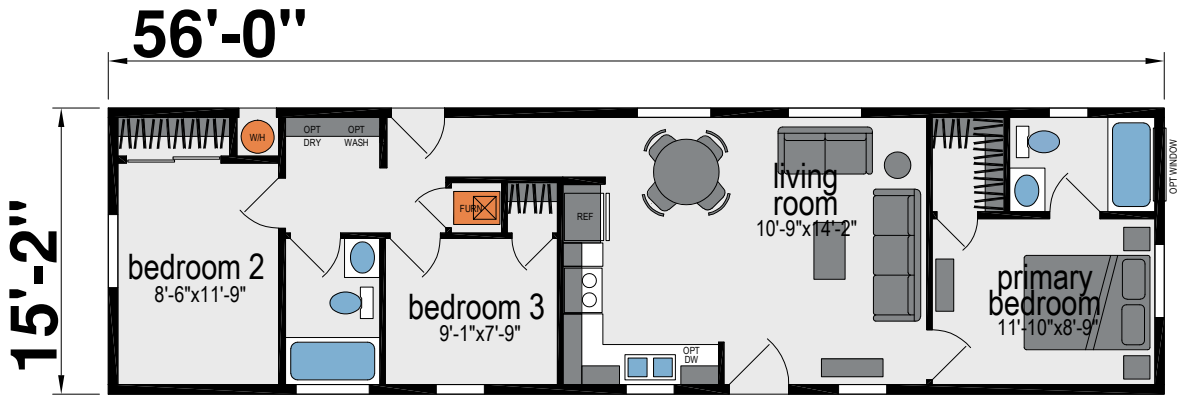
K201J

Two Bed | Two Bath | 849 Sq. Ft.



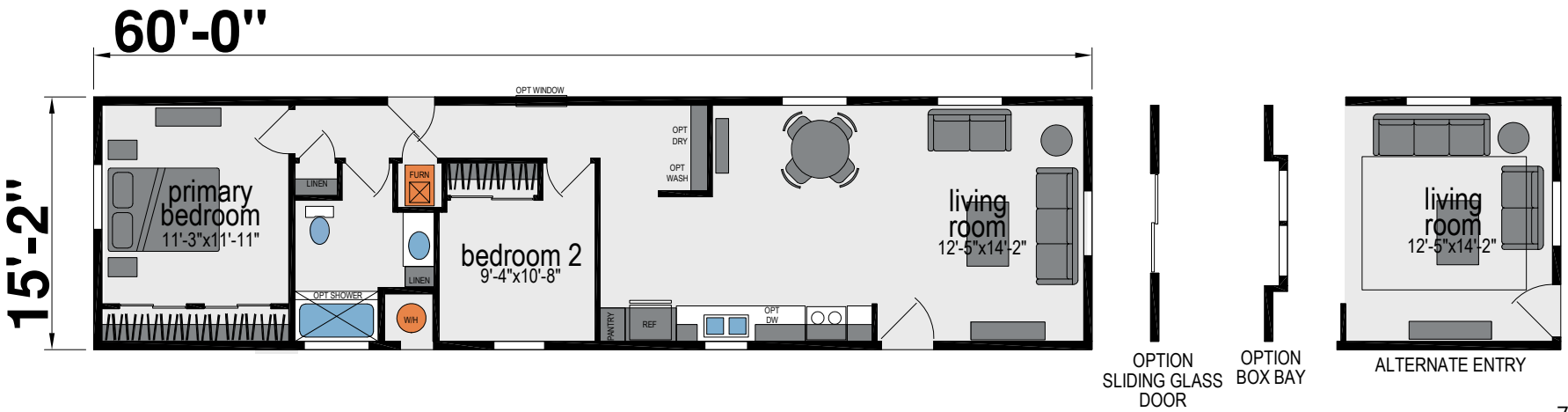
K202J

Three Bed | Two Bath | 849 Sq. Ft.



K251J

Two Bed | One Bath | 910 Sq. Ft.



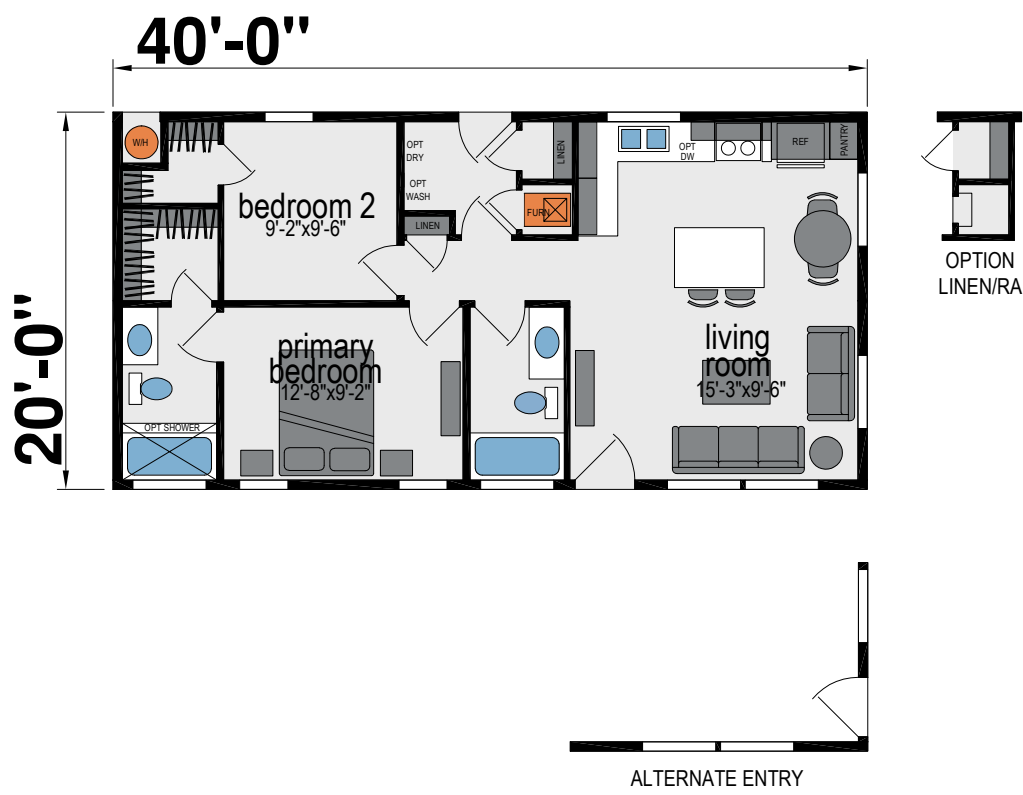
K206J

Three Bed | Two Bath | 910 Sq. Ft.



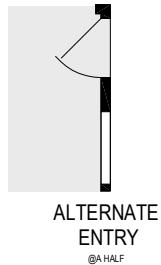
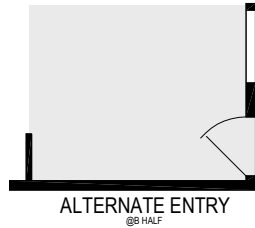
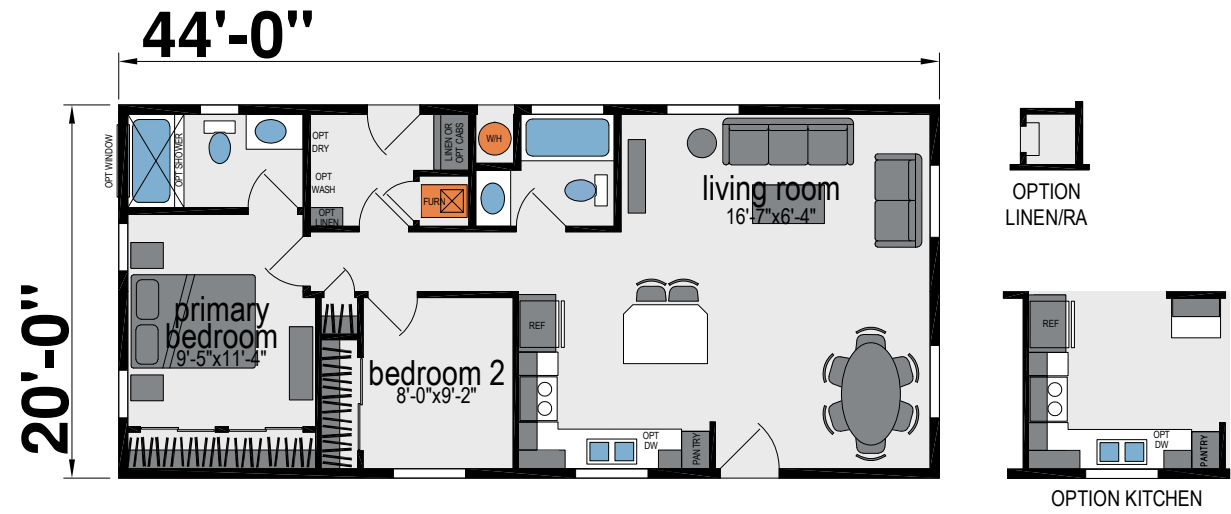
4610J

Two Bed | Two Bath | 800 Sq. Ft.



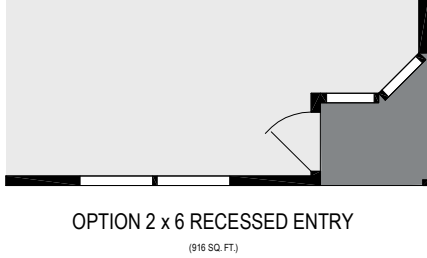
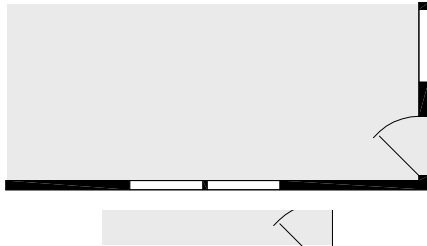
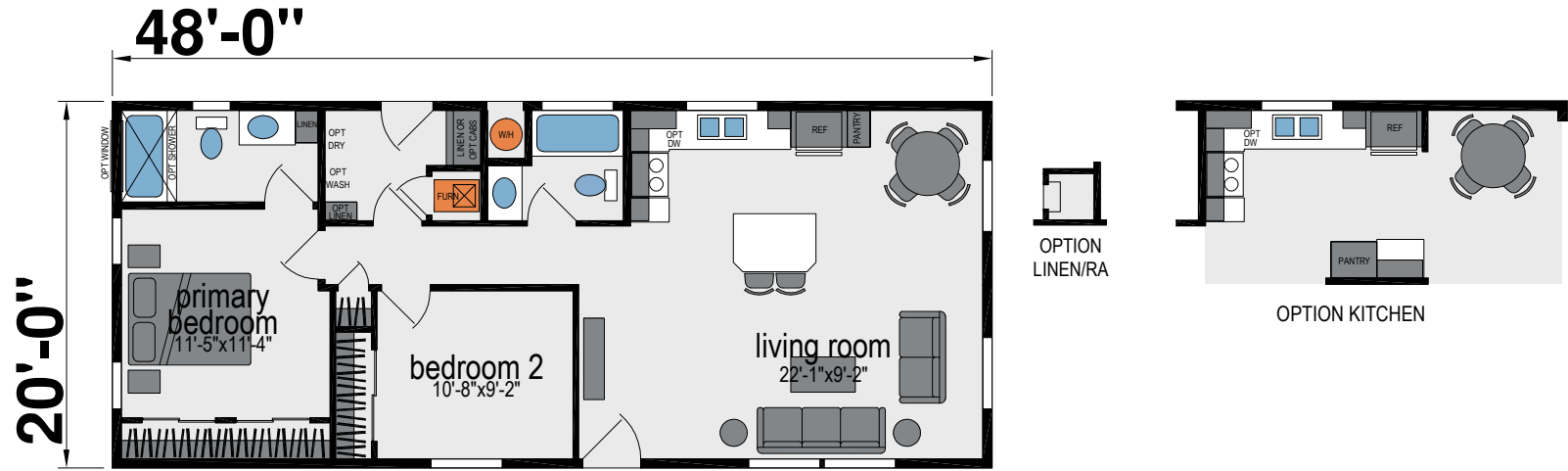
4602J

Two Bed | Two Bath | 880 Sq. Ft.



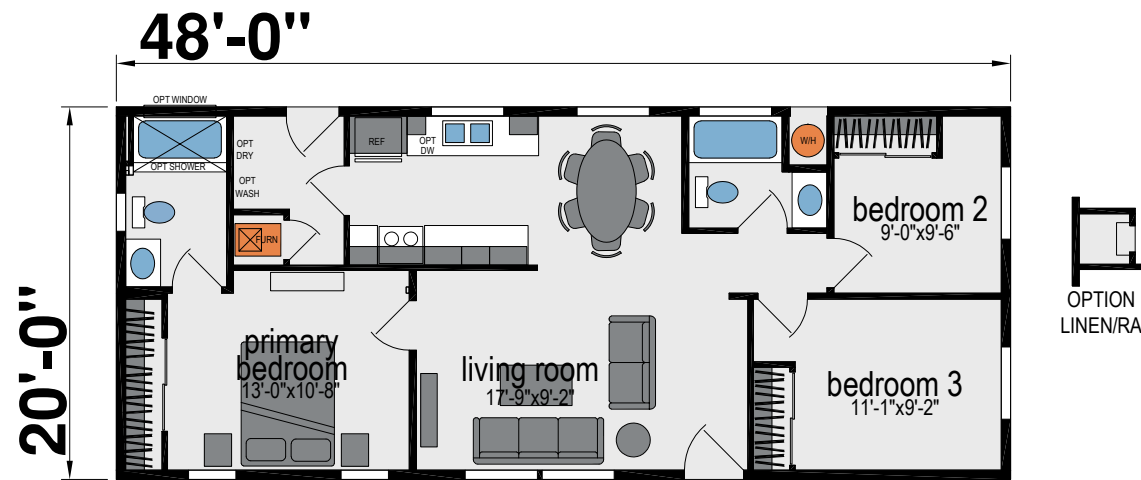
4604J

Two Bed | Two Bath | 960 Sq. Ft.



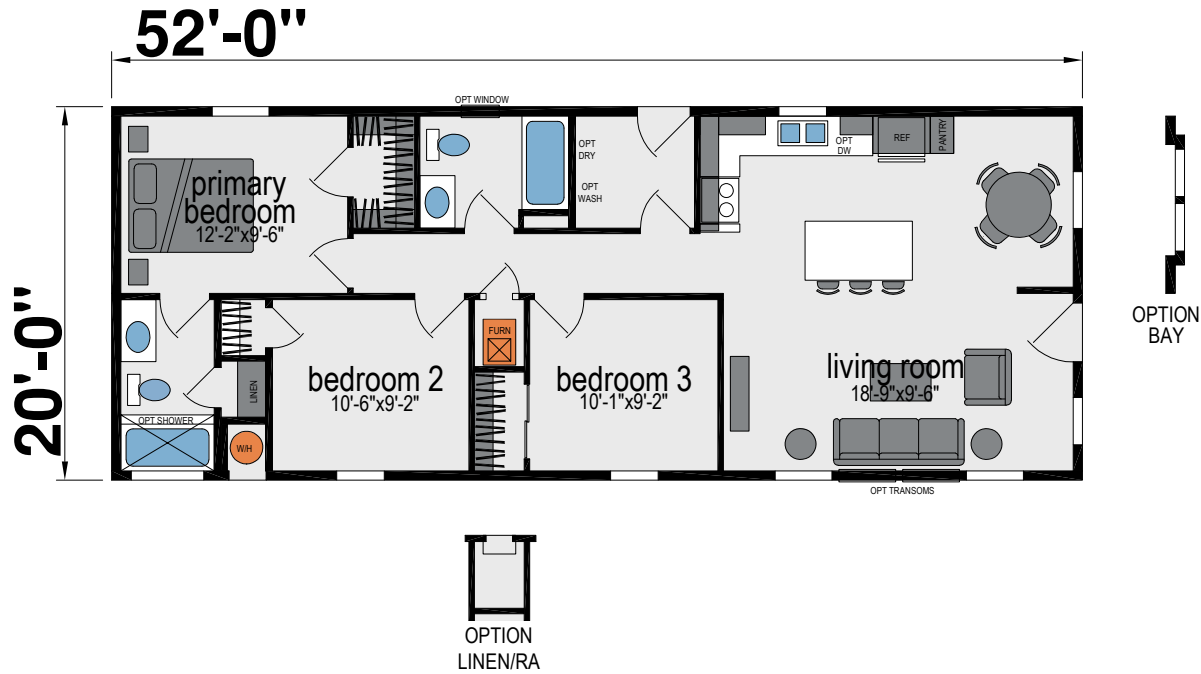
4617J

Three Bed | Two Bath | 960 Sq. Ft.



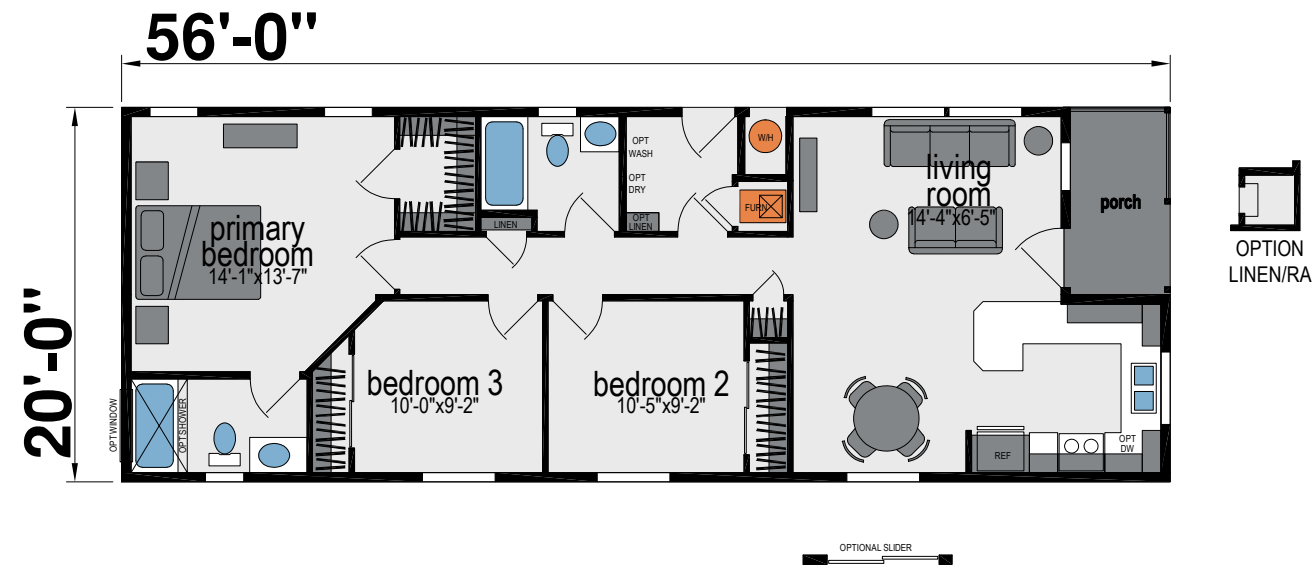
4606J

Three Bed | Two Bath | 1,040 Sq. Ft.



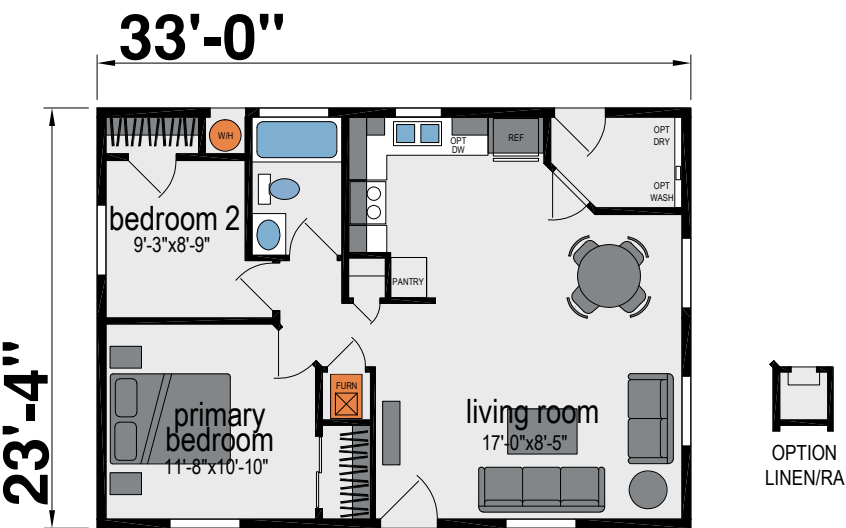
4608J

Three Bed | Two Bath | 1,066 Sq. Ft.



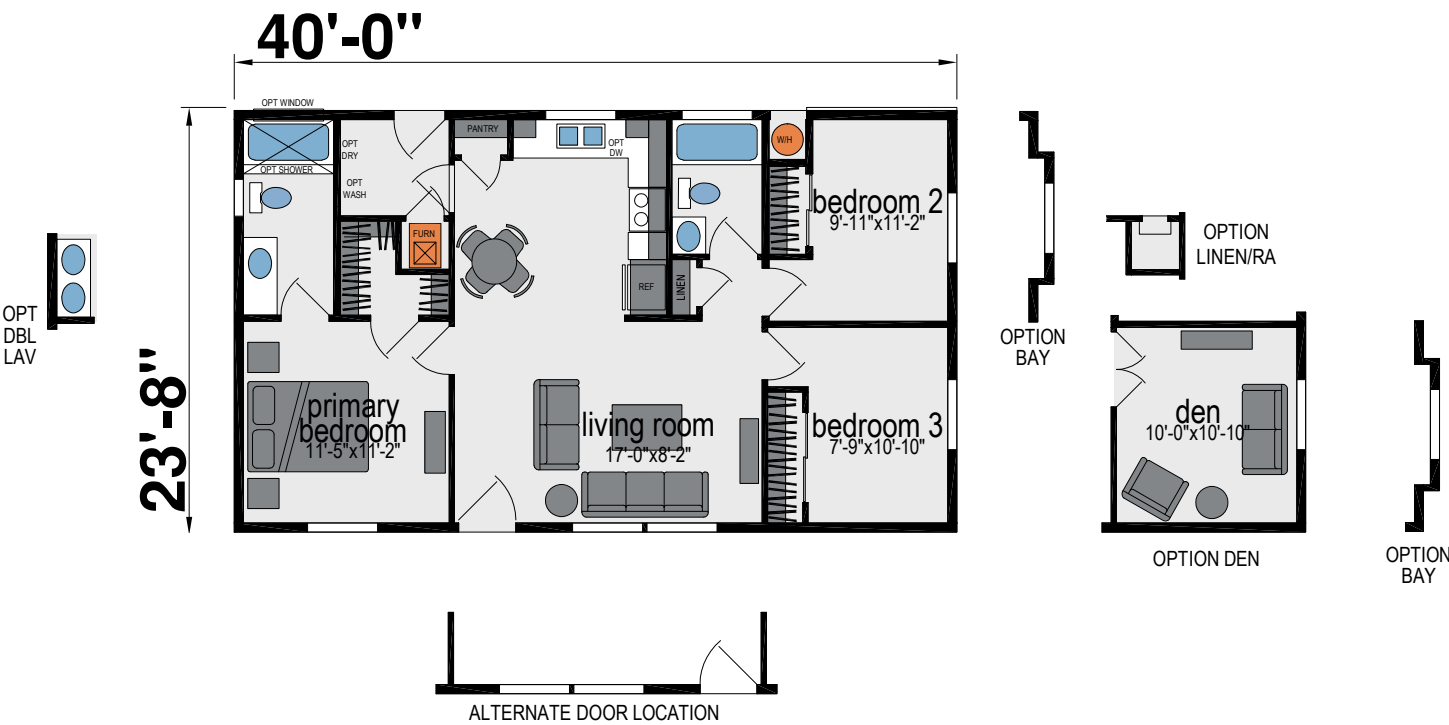
K602J

Two Bed | One Bath | 770 Sq. Ft.



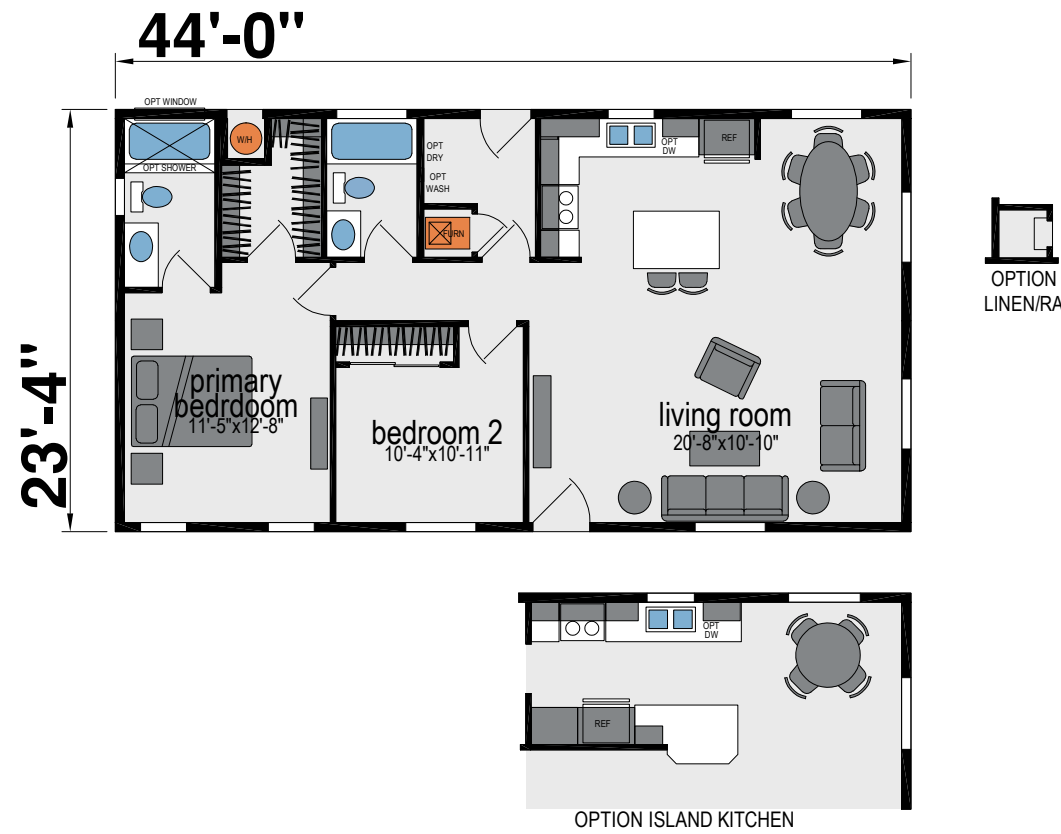
K610J

Three Bed | Two Bath | 946 Sq. Ft.



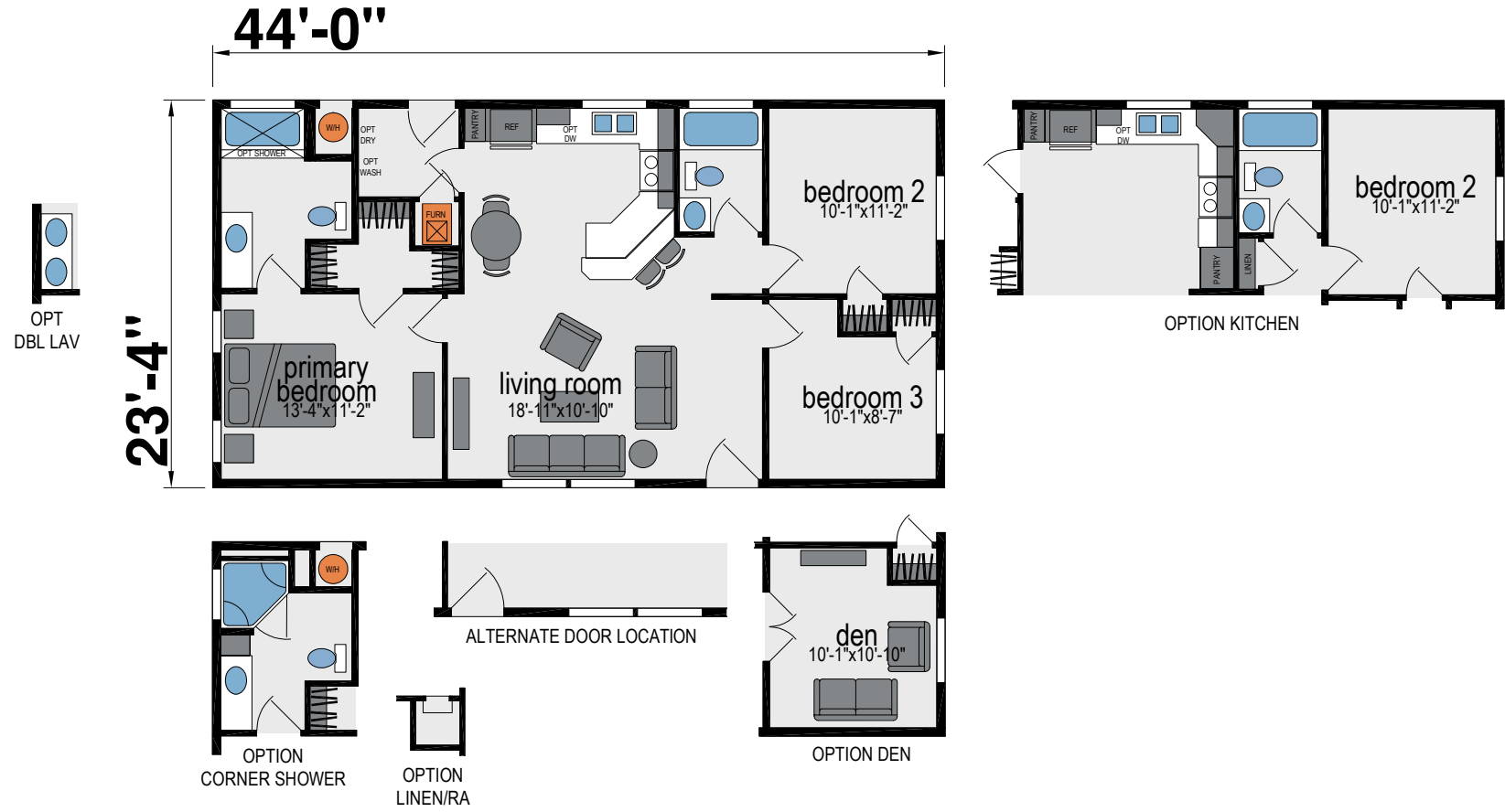
K604J

Two Bed | Two Bath | 1,026 Sq. Ft.



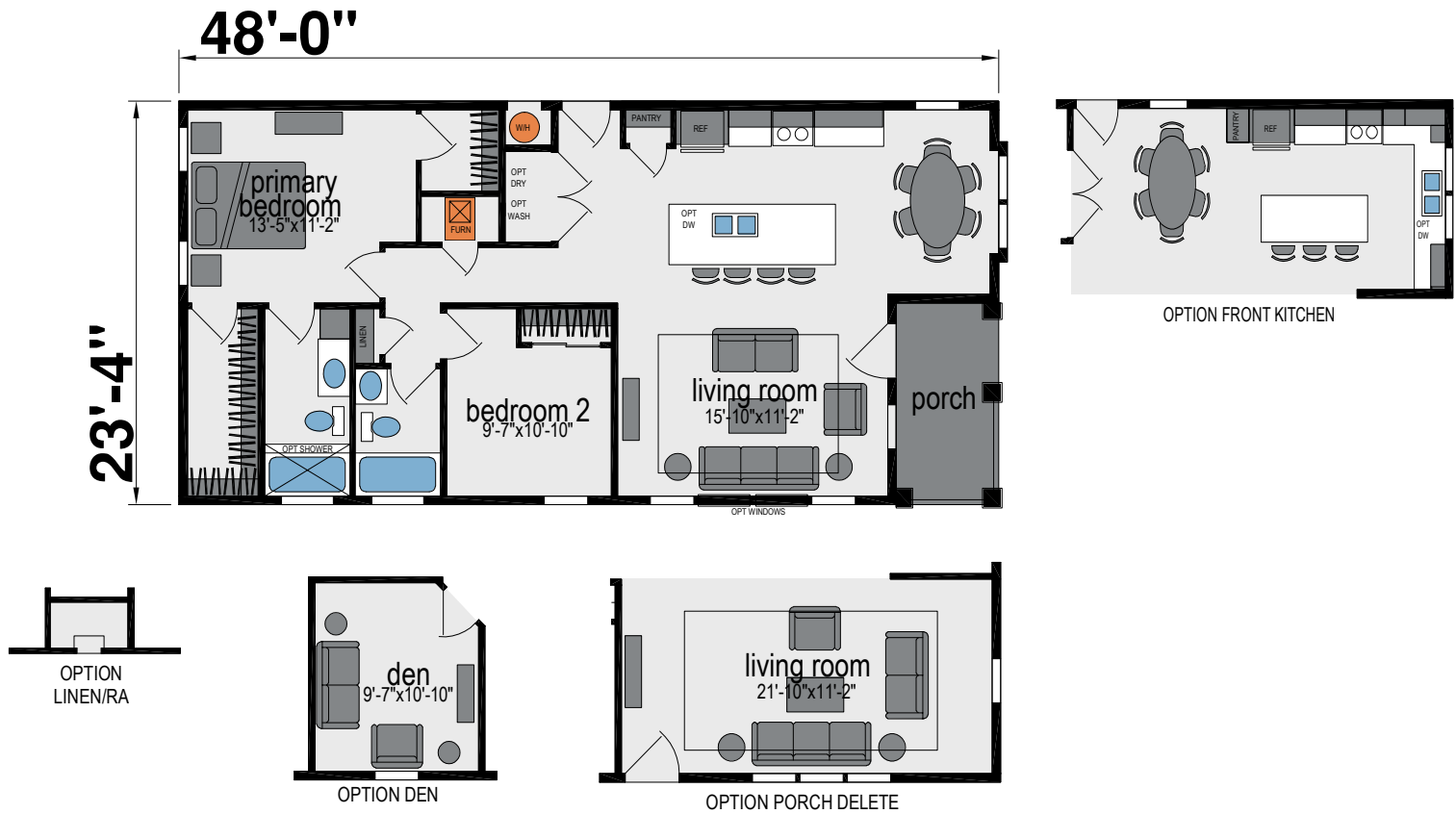
K620J

Three Bed | Two Bath | 1,026 Sq. Ft.



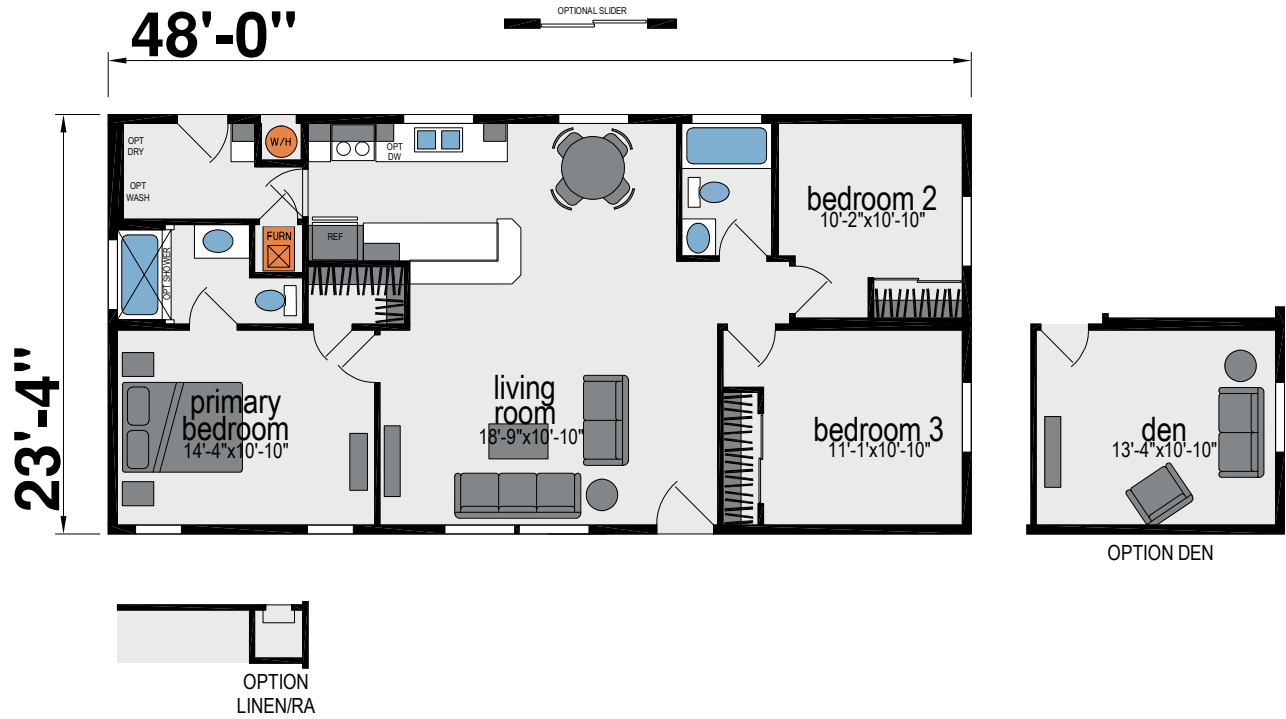
M103J

Two Bed | Two Bath | 1,053 Sq. Ft.



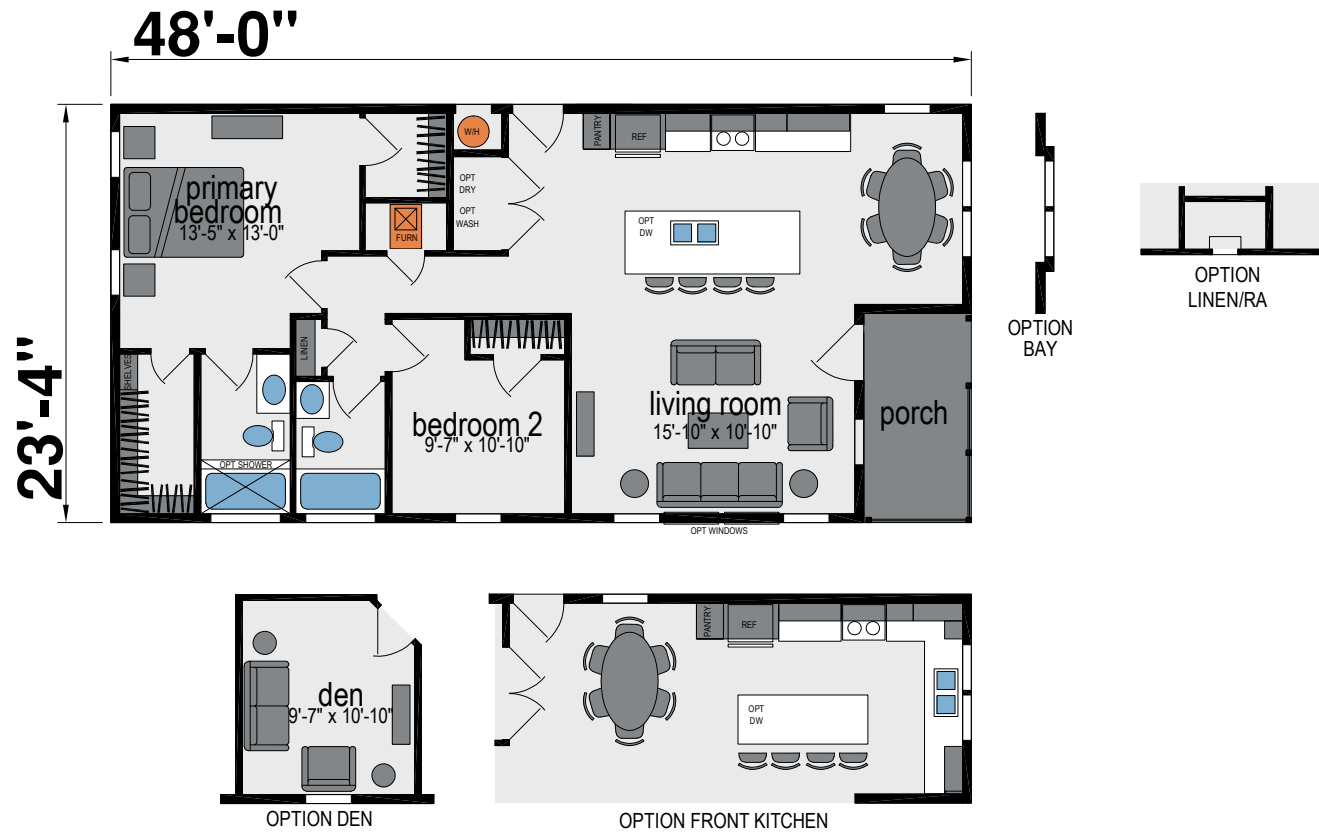
K600P

Three Bed | Two Bath | 1,120 Sq. Ft.



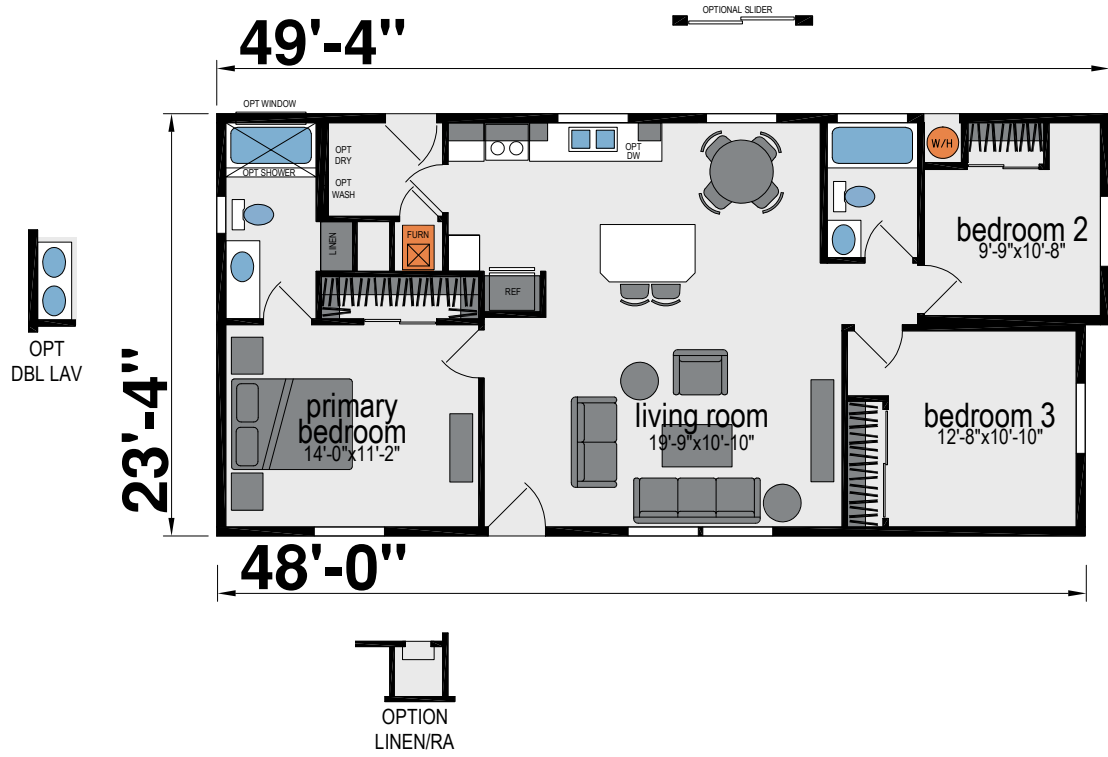
K603J

Two Bed | Two Bath | 1,050 Sq. Ft.



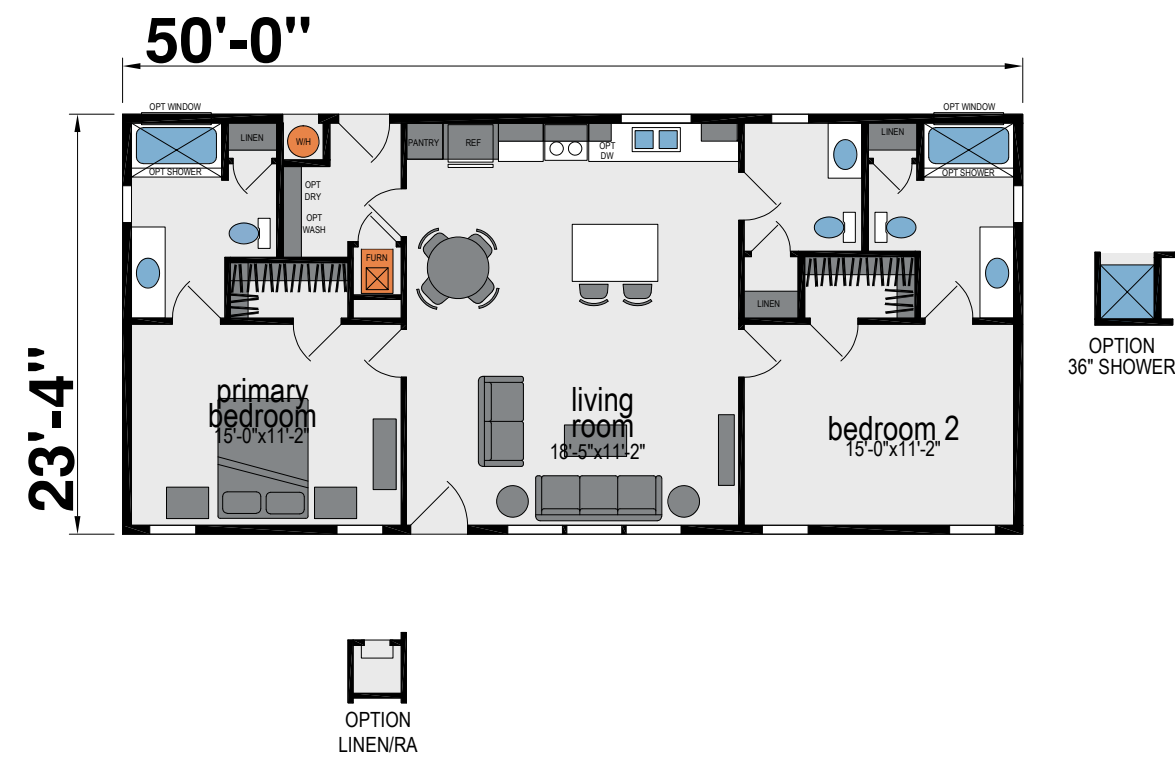
K613J

Three Bed | Two Bath | 1,135 Sq. Ft.



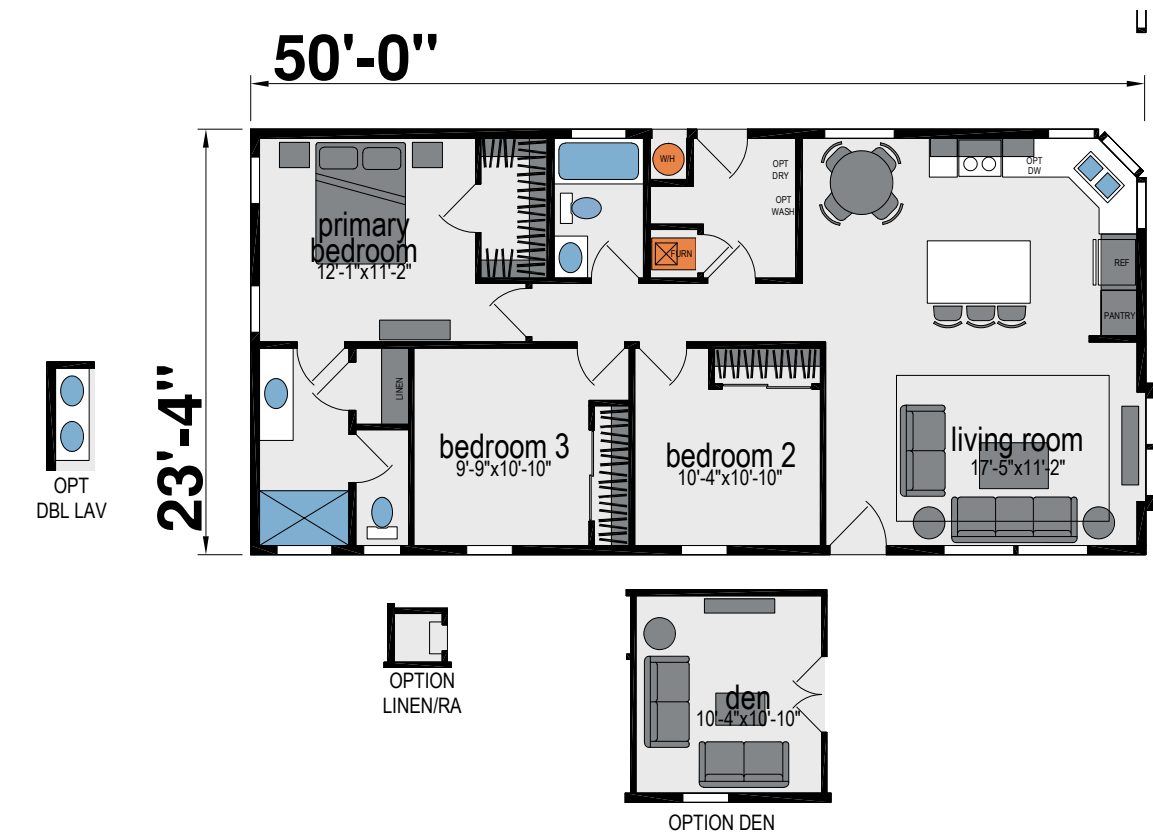
K615J

Two Bed | Two & 1/2 Bath | 1,166 Sq. Ft.



M105J

Three Bed | Two Bath | 1,167 Sq. Ft.



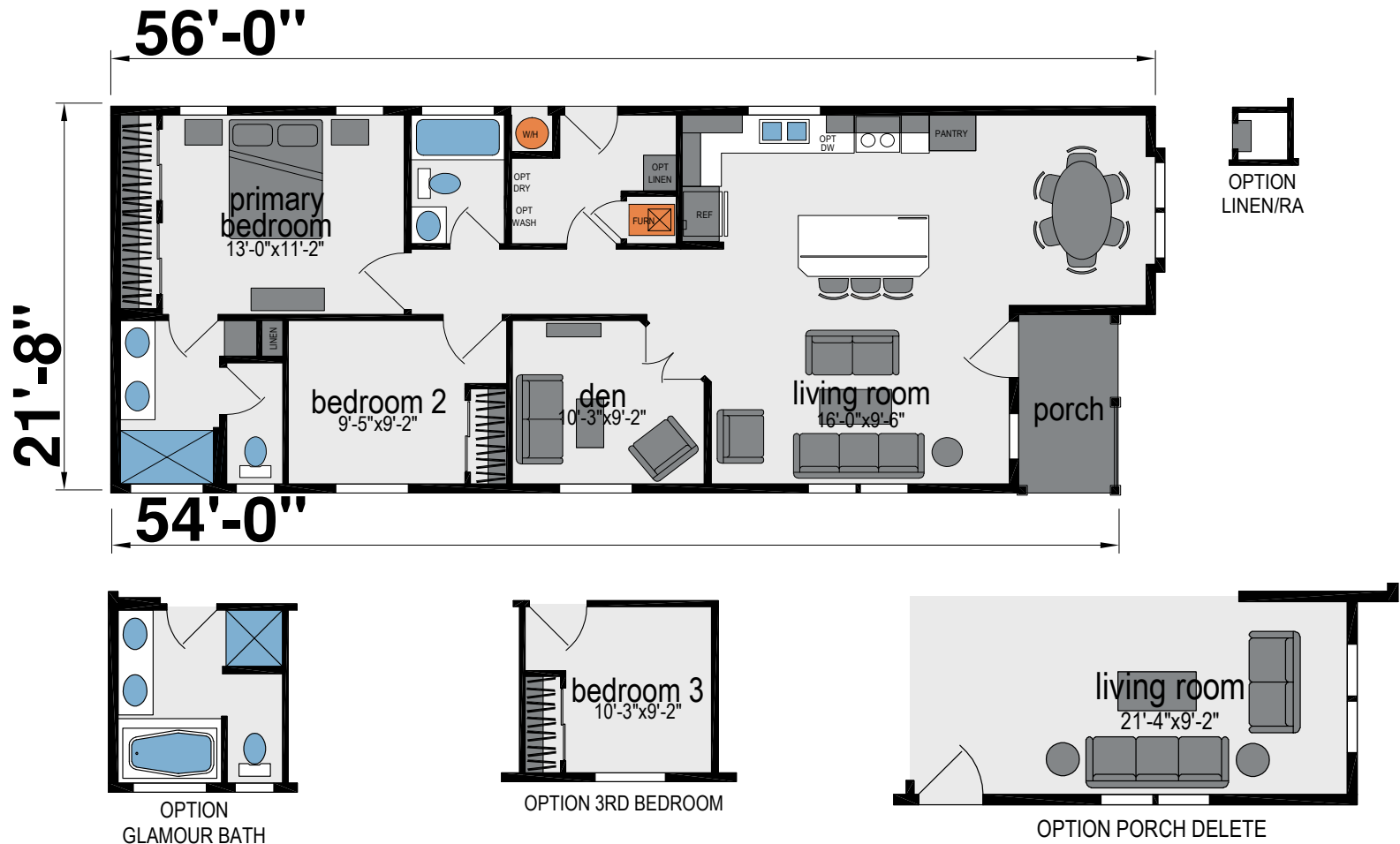
K770J

Three Bed | Two Bath | 1,173 Sq. Ft.



K300J

Two Bed | Two Bath | 1,173 Sq. Ft.



Building Your Home to **Green** Standards



K610J
28



Highlights

- Engineered for Efficient Use of Materials
- 80% of Construction Waste Reused or Recycled
- Use of Engineered Lumber
- Low V.O.C. Adhesives and Paint
- Formaldehyde-Free Insulation
- Sealed and Tested Ducting System
- High Efficiency Toilets
- Efficient Distribution Plumbing System
- Mechanical Fresh Air Ventilation System

K610J
29

Standard Features

Construction

- ENERGY STAR® Certified
- 9’ Sidewalls with Flat Ceiling – Per Plan
- 2x6 Floor Joists – Per Plan
- 2x8 Floor Joists – Per Plan
- 2x6 Exterior Sidewalls
- R-33 Ceiling Insulation
- R-19 Wall Insulation
- R-22 Floor Insulation
- 20 lb. Roof Load
- 3:12 Roof Pitch
- 4:12 Roof Pitch (Single-Section Floor Plans)
- Tongue and Groove OSB Floor Decking
- Dual-Glazed Vinyl Framed Low-E Windows
- Steel Outriggers on Exterior Walls
- PEX Water Lines
- Shut-Off Valves at All Sinks and Toilets
- WUI Compliant Roof Vents

Exterior

- Vertical Cement Fiber Siding
- Class “A” Architectural Roof Shingles
- Exterior Window Trim
- Exterior Light at Front and Rear Doors
- 36” 6-Panel Front Door with Deadbolt, Peephole and Knocker

- 32” Cottage Rear Door with Deadbolt
- 12” Front Overhang
- 12” Rear Overhang
- 6” Side Eaves – Per Plan
- Semi-Gloss Exterior Paint

Interior

- ½” Tape and Texture Drywall Throughout
- Sculptured Floor Molding and Door Casing
- Hand-Finished Knock-Down Wall Texture
- Low Sheen Interior Paint
- 3-Panel By-Pass Closet Doors (Floor Plan Specific)
- 3-Panel Interior Doors with 3-Mortised Nickel Hinges
- Lever Door Handles with Satin Nickel Finish
- Shaw® Carpet
- 3/8” Rebond Capet Pad
- Vinyl Flooring in Kitchen, Dining Room, Bathrooms and Utility Room – Per Plan
- 2” Faux Wood Blinds with Faux Wood Valance
- Double Wood Shelf and Pole in Primary Bedroom Wardrobe
- Single Wood Shelf and Pole in Guest Bedroom Wardrobe
- Wood Shelving in Hall Closet and Linen Closets

- Wood Shelf and Pole Above Washer/Dryer Area (Floor Plan Specific)
- Toe-Kick Registers in Kitchen and Bathrooms

Kitchen

- Hardwood Shaker Style Cabinets
- 42” Tall Overhead Cabinets Kitchen
- Crown Molding on All Overhead Cabinets
- ¾” Adjustable Base and Overhead Shelves
- Large Kitchen Island (Floor Plan Specific)
- Full Extension Ball Bearing Drawer Guides
- Whirlpool® Brand Name Appliances Stainless Steel
- 18.1 Cu.Ft. Frost-Free Refrigerator
- 30” Deluxe Gas Range with Electronic Ignition, Window, Clock and Timer
- 30” Range Hood Vent
- Deep Stainless Steel Self Rimming Sink
- Single-Lever Faucet with Pull-Out Sprayer with Chrome Finish
- Bank of Drawers
- Laminate Countertop
- Laminate Square Edge
- Laminate Backsplash

Electrical, Heating, & Plumbing

- 100 Amp Exterior Electrical Panel Box
- G.F.I. Protected Outlets in Kitchen and Baths
- Exterior G.F.I. Protected Outlet
- USB Receptacle in Kitchen Area
- Smoke Detectors with Battery Back-Up
- Switch Wall Outlet in Living Room and Bedrooms
- Shut-Off Valves Throughout
- Silent Rocker Light Switches
- 3-Way Switch in Hall and Utility Room
- 40-Gallon Gas Water Heater
- Down Flow Gas Furnace
- Programmable Thermostat
- Plumb for Washer
- Prep for Gas Dryer
- Recessed Dryer Vent Box
- 4” Can Lights

Bathrooms

- 60” One-Piece Fiberglass Tub / Shower
- China Self Rimming Sink with Overflow and Pop-Up Drain
- Single-Lever Diverter with Chrome Finish
- Dual-Control Faucets with Chrome Finish
- Elongated Water-Saver Commode
- Vanity Light Fixture
- Vanity Mirror
- Ceiling Exhaust Fan
- 36” High Countertop
- Laminate Countertop
- Laminate Square Edge
- Laminate Backsplash
- Full Extension Ball Bearing Drawer Guides
- Linen Closet – Primary Bathroom
- Drawer Bank – Primary Bathroom
- Beveled Medicine Cabinet
- Ventilation Window
- Towel Bar and Tissue Holder
- Privacy Lock

Popular Options

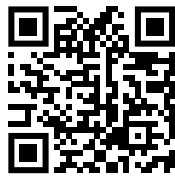
- Tankless Gas Water Heater
- Radiant Roof Barrier
- Skylights or Solar Tubes
- WUI Compliant Windows
- Fire Sprinkler System

ADU Accessory Dwelling Units

Due to continuous product development and improvement, prices, specifications, and materials are subject to change without notice or obligation. Square footage and other dimensions are approximate. Exterior images may be artist renderings and are not intended to be an accurate representation of the home. Renderings, photos and floor plans may be shown with optional features or third-party additions. All floor plans and features are subject to local code approval. *Skyline is a brand of Champion Home Builders, Inc.



CUSTOM LIVING
MANUFACTURED HOMES



Contact Us Today!

Member:



33302 Valle Road, Suite 200, San Juan Capistrano, CA 92675 | (949) 441-5111