

ALTITUDE™



CUSTOM LIVING
MANUFACTURED HOMES

**America's Most Trusted®
Manufactured Home Builder**

5 YEARS IN A ROW | 2021-2025



Skyline received the highest numerical score in the proprietary Lifestory Research 2021-2025 America's Most Trusted® Manufactured Home Builder Brand study. Study results are based on experiences and perceptions of people surveyed. Your experiences may vary. Visit www.lifestoryresearch.com.



ALTITUDE™

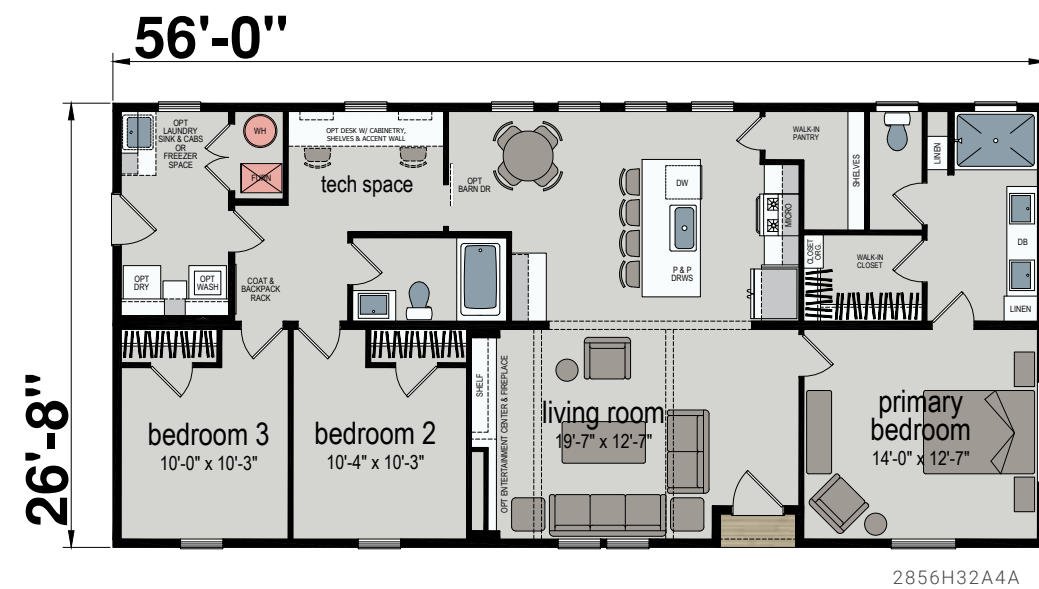
Featuring high-end architectural features both inside and out, the Altitude series is for those seeking an elevated home ownership experience and exceptional value.



CUSTOM LIVING
MANUFACTURED HOMES

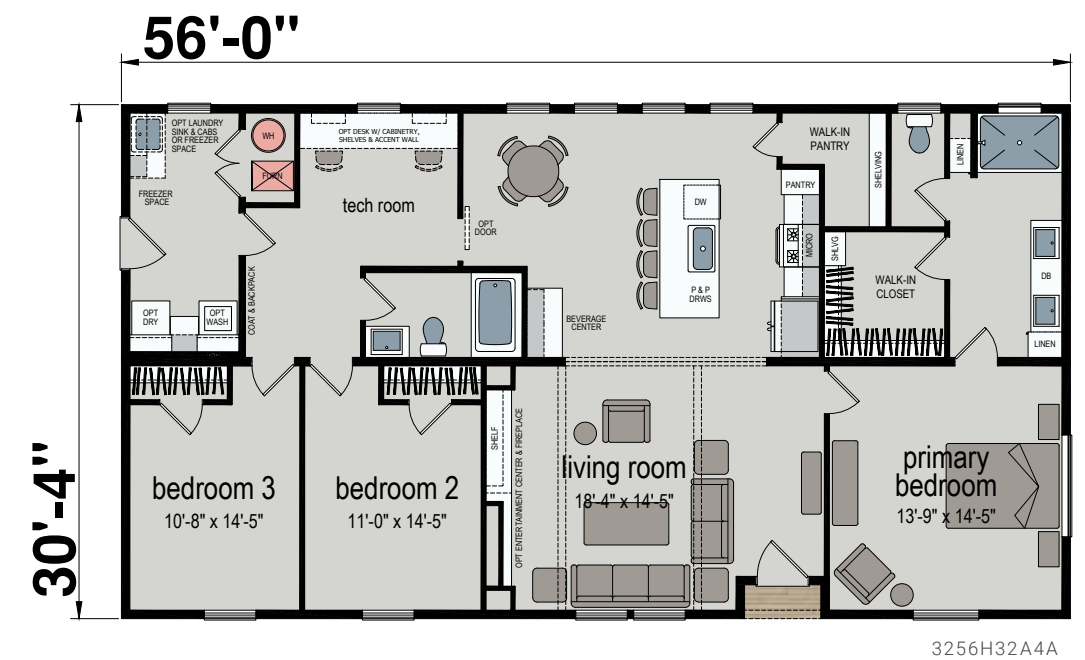
ALTITUDE™ KRITZER 1484

Three Bed | Two Bath | 1,484 Sq. Ft.



ALTITUDE™ KRITZER 1689

Three Bed | Two Bath | 1,689 Sq. Ft.



ALTITUDE™ | KRITZER



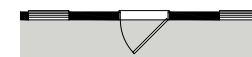
Beverage Center
w/ Mini Fridge



Desk and Cabinetry



Freestanding Tub



Optional Full Light Door



Optional Sliding Glass Door

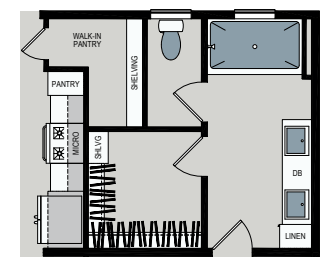


Optional Laundry Sink & Cabinets

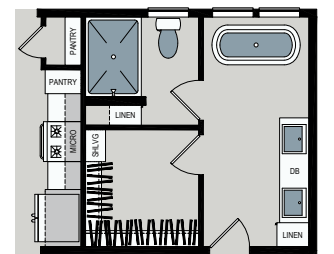


Optional Centered
Entertainment Center & Fireplace

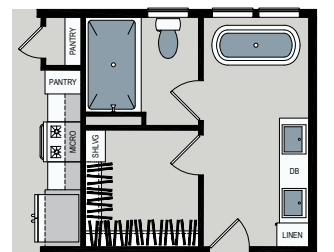
Primary Bath Options



Alternate Primary Bath One
w/ 42"x72" Shower



Alternate Primary Bath Two
w/ 42"x60" Shower &
Freestanding Tub



Alternate Primary Bath Three
w/ 42"x72" Shower &
Freestanding Tub

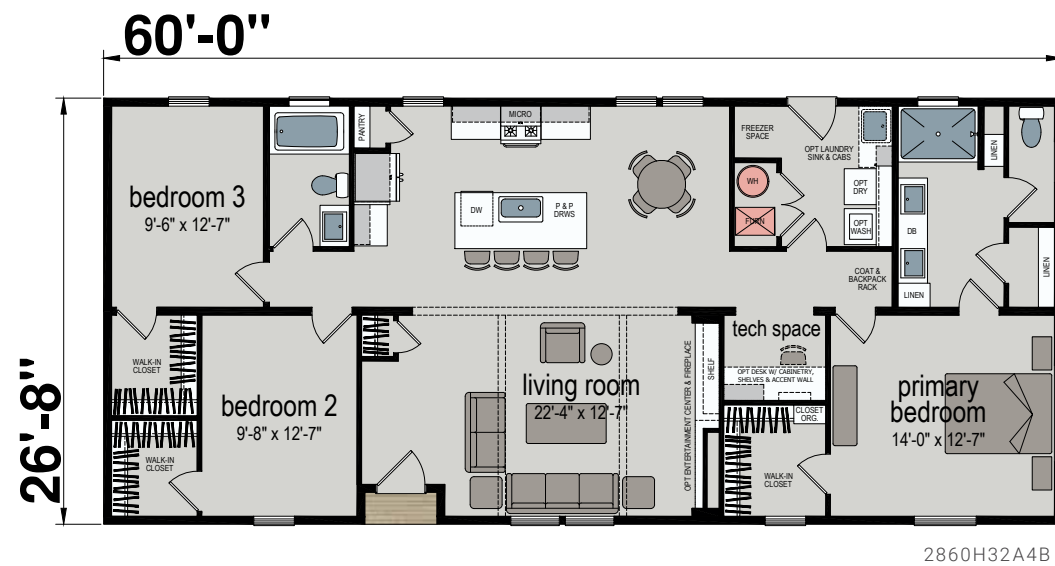


KRITZER

ALTITUDE™

WHITNEY 1591

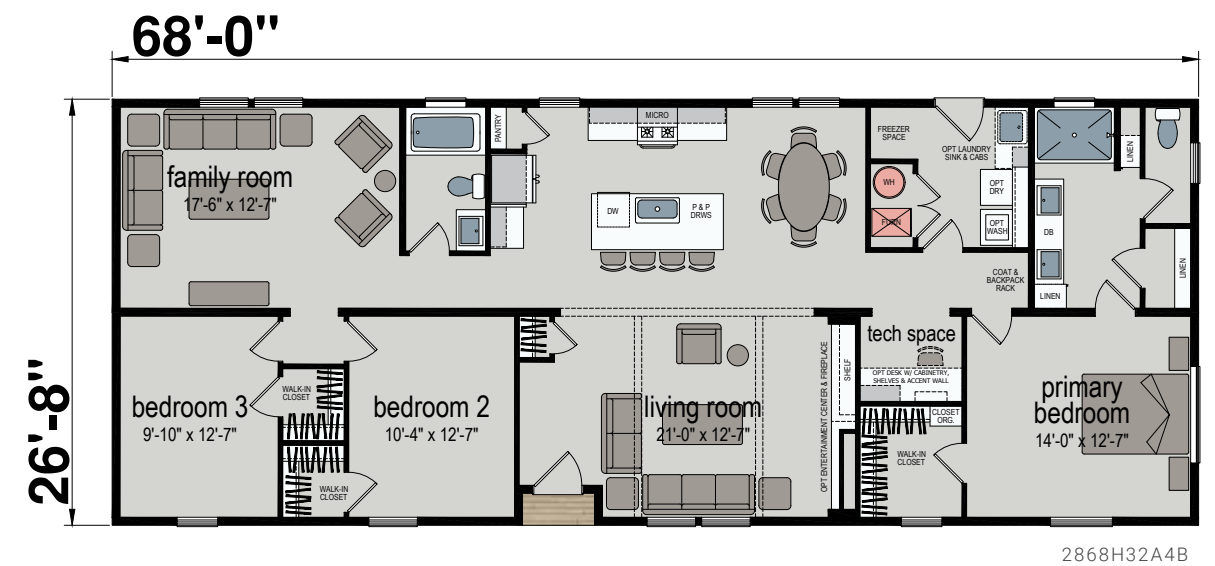
Three Bed | Two Bath | 1,591 Sq. Ft.



ALTITUDE™

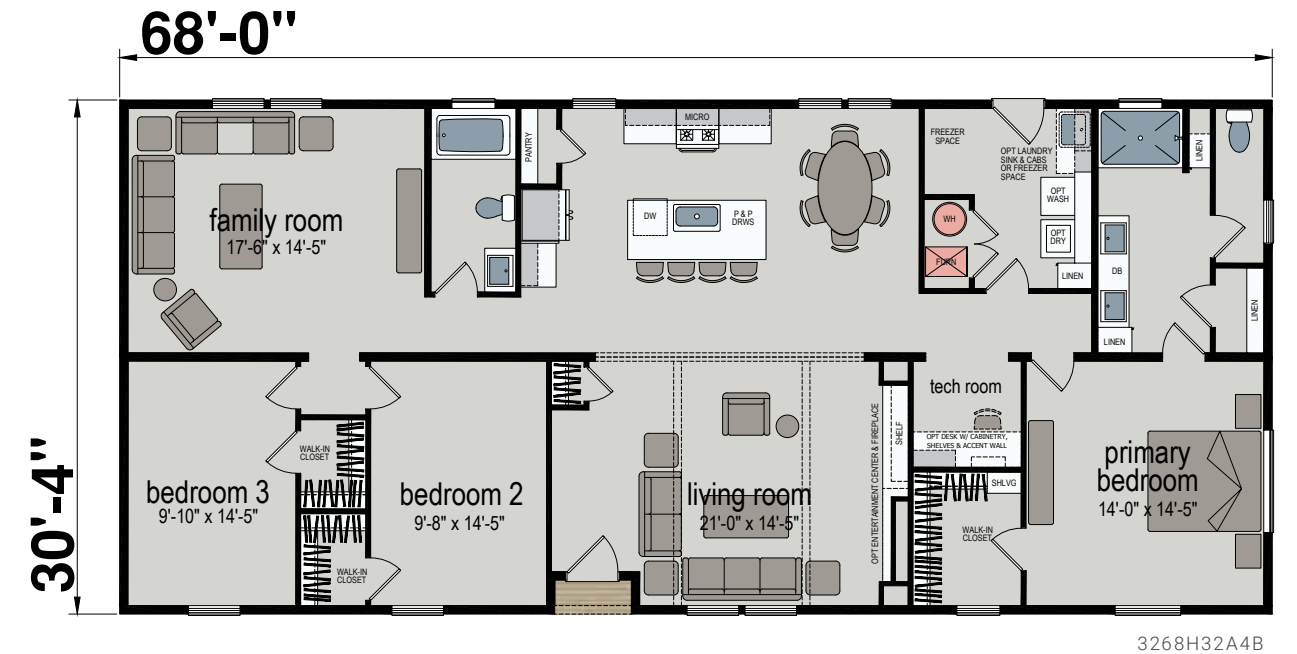
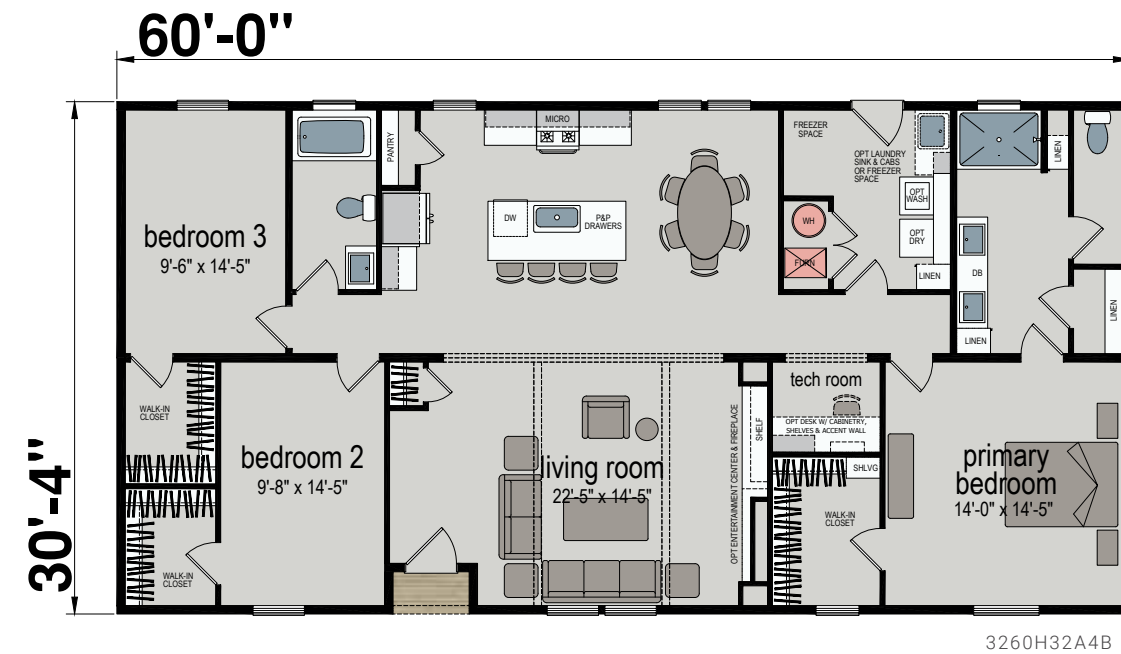
WHITNEY 1804 3B

Three Bed | Two Bath | 1,804 Sq. Ft.



ALTITUDE™ | **WHITNEY 1808**
Three Bed | Two Bath | 1,808 Sq. Ft.

ALTITUDE™ | **WHITNEY 2053 3B**
Three Bed | Two Bath | 2,053 Sq. Ft.



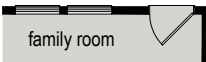


WHITNEY

ALTITUDE™ | WHITNEY



Desk & Cabinetry



Full Light Door



Barn Door

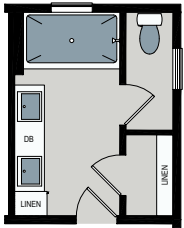


Sliding Glass Door

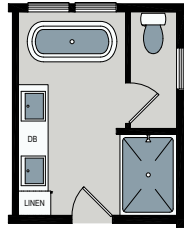


Optional Centered
Entertainment Center & Fireplace

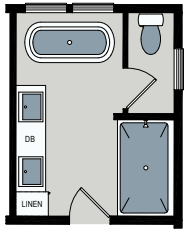
Primary Bath Options



Alternate Primary Bath One
w/ 42"x72" Shower



Alternate Primary Bath Two
w/ 42"x60" Shower &
Freestanding Tub



Alternate Primary Bath Three
w/ 42"x72" Shower &
Freestanding Tub

ALTITUDE™

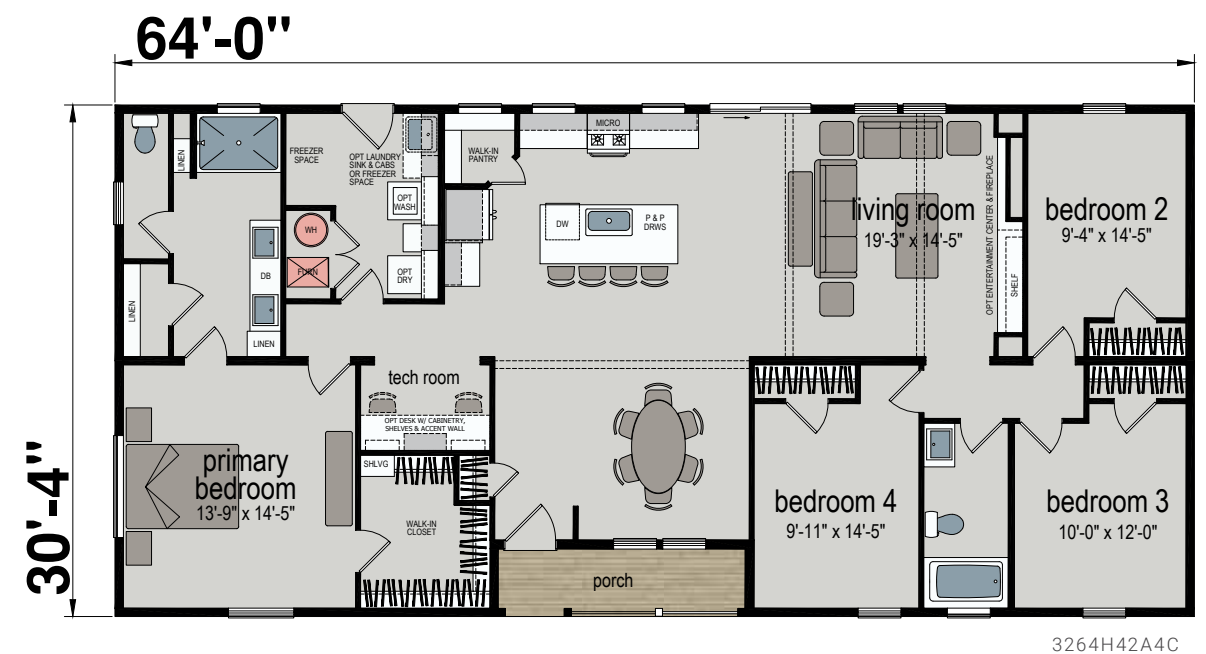
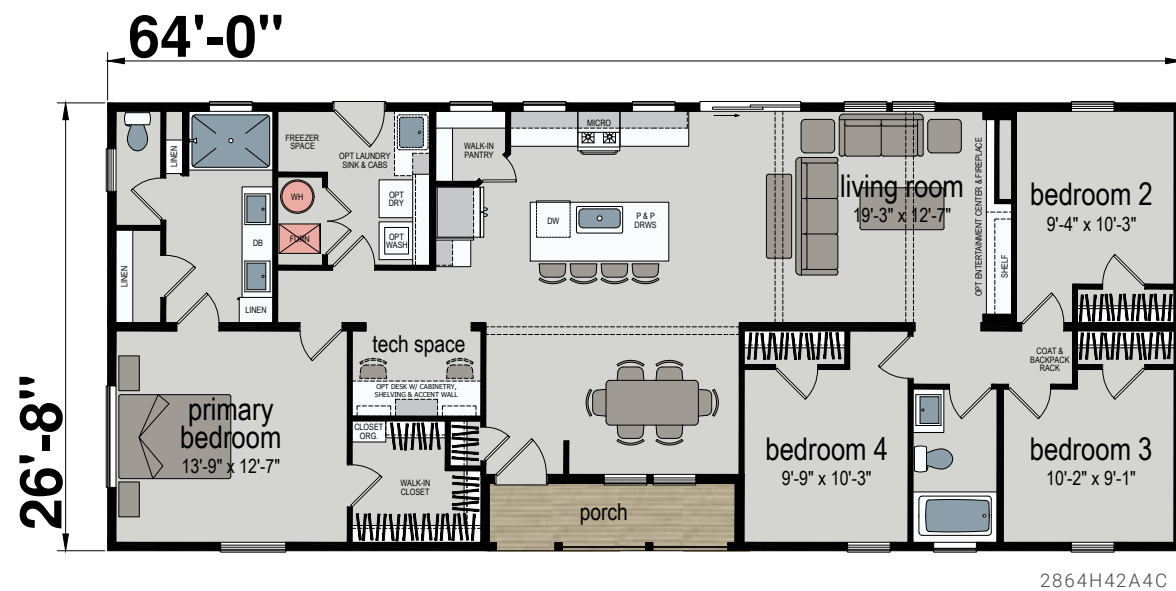
VISTA VILLA 1648

Four Bed | Two Bath | 1,648 Sq. Ft.

ALTITUDE™

VISTA VILLA 1882

Four Bed | Two Bath | 1,882 Sq. Ft.

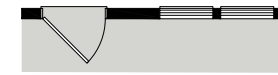




ALTITUDE™ | VISTA VILLA



Desk & Cabinetry

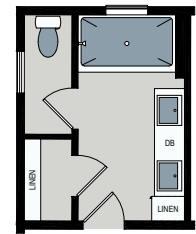


Full Light Door

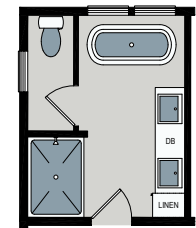


Optional Centered
Entertainment Center & Fireplace

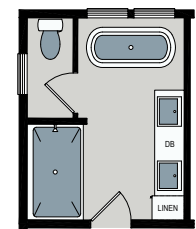
Primary Bath Options



Alternate Primary Bath One
w/ 42"x72" Shower



Alternate Primary Bath Two
w/ 42"x60" Shower &
Freestanding Tub

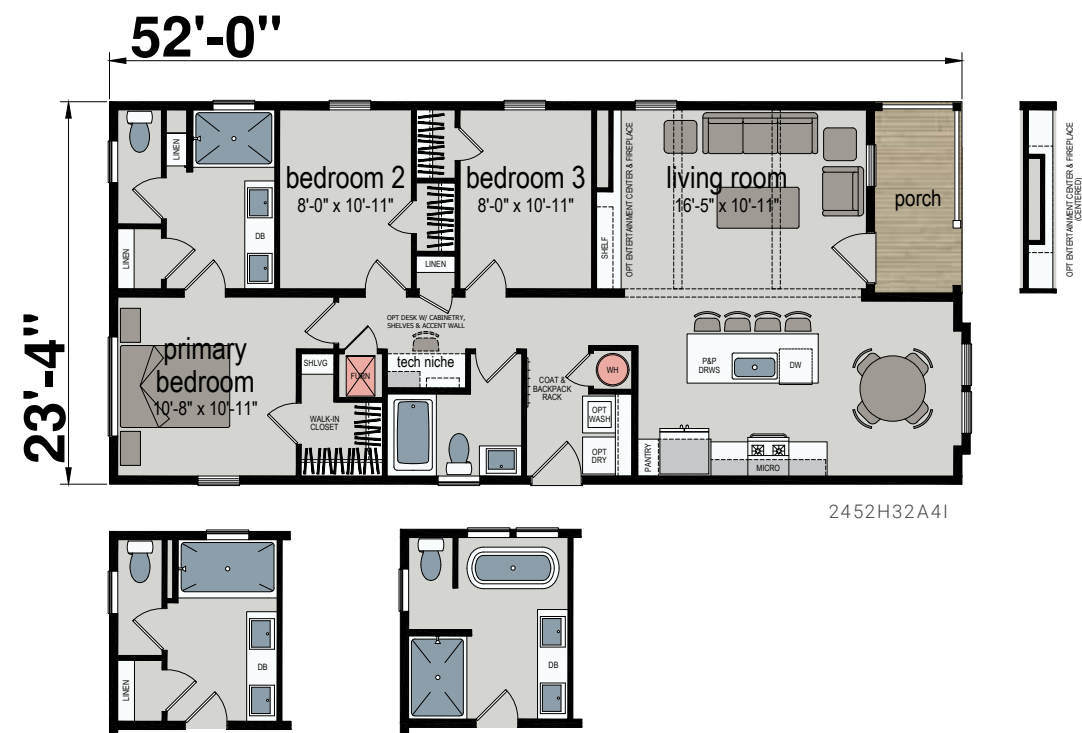


Alternate Primary Bath Three
w/ 42"x72" Shower &
Freestanding Tub

ALTITUDE™

KEPHART 1151

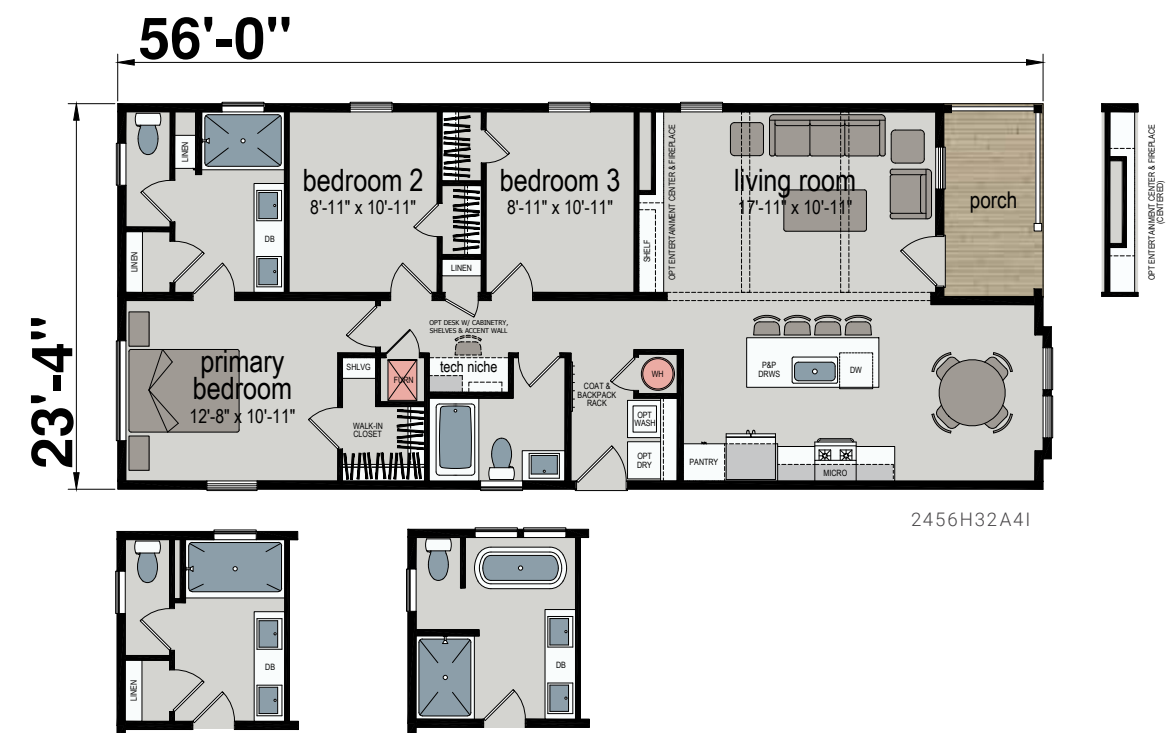
Three Bed | Two Bath | 1,151 Sq. Ft.



ALTITUDE™

KEPHART 1237

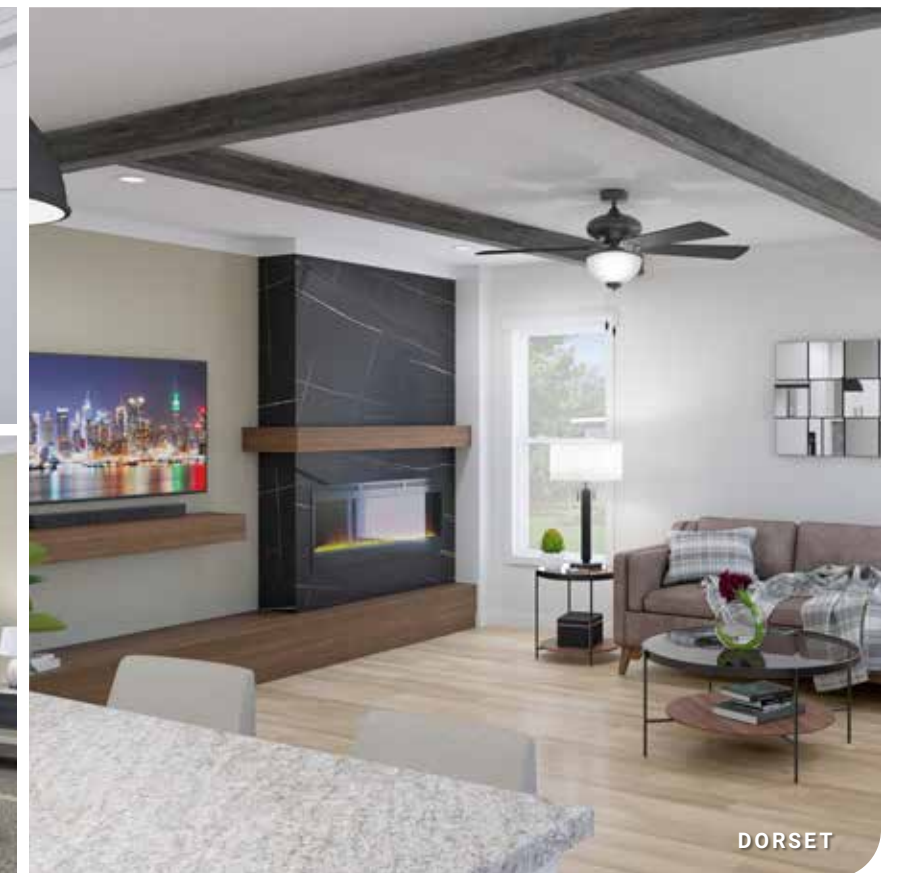
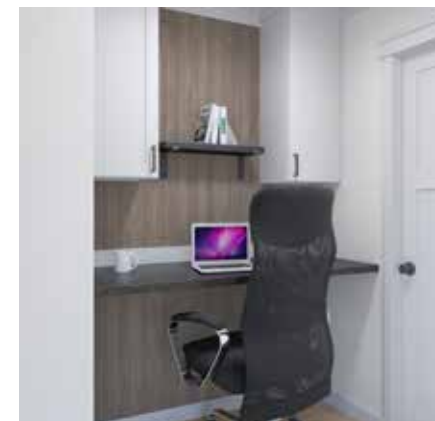
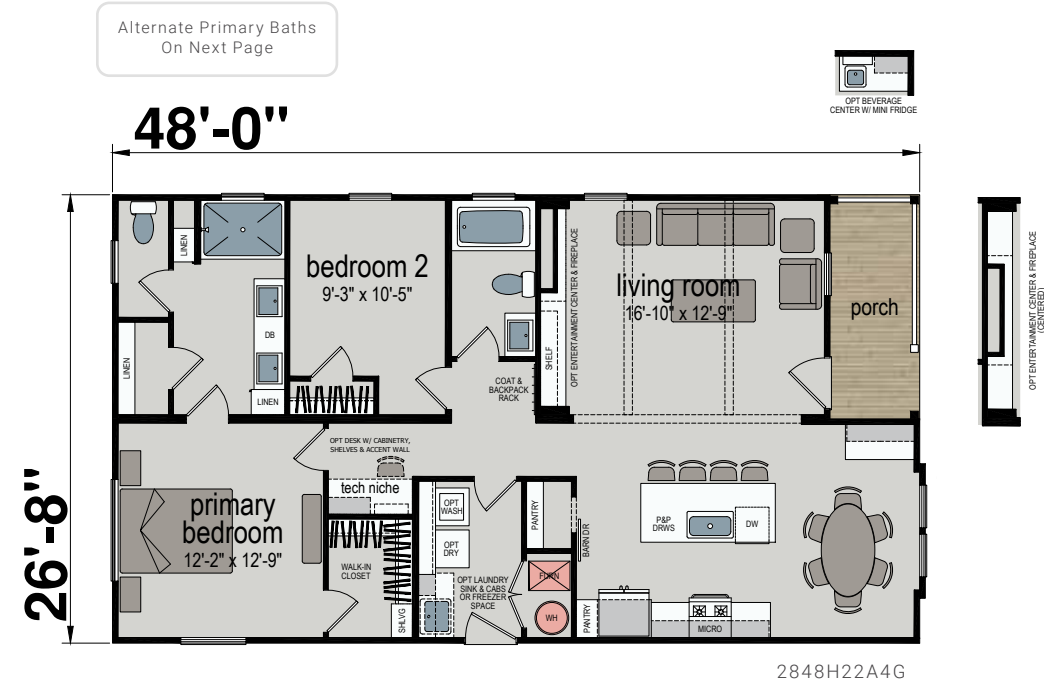
Three Bed | Two Bath | 1,237 Sq. Ft.



ALTITUDE™

DORSET 1211

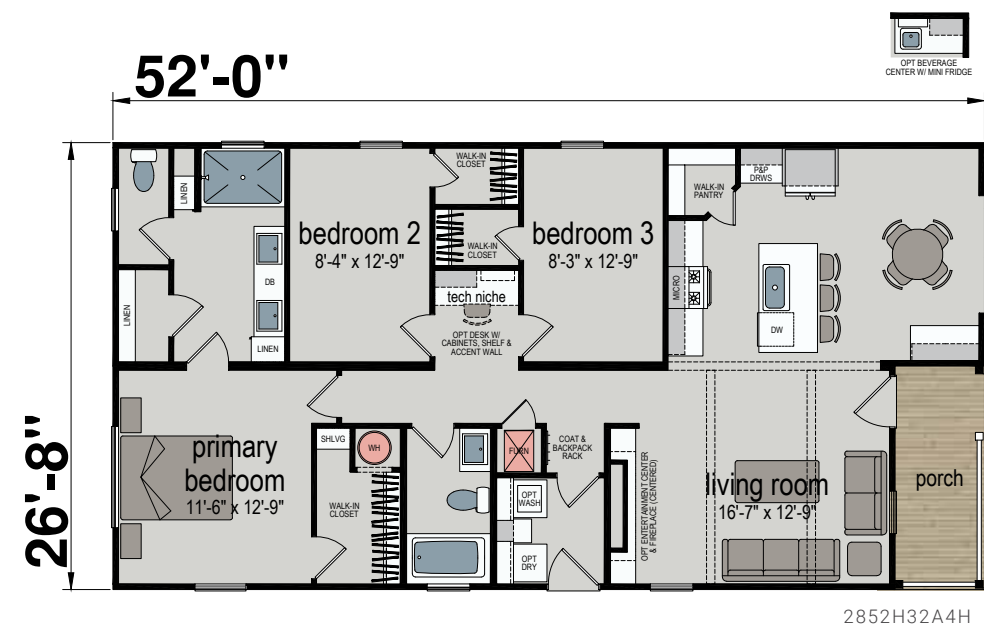
Two Bed | Two Bath | 1,211 Sq. Ft.



ALTITUDE™

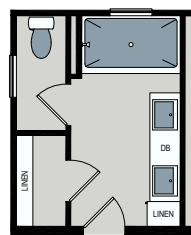
ATMOSPHERE 1318

Three Bed | Two Bath | 1,318 Sq. Ft.

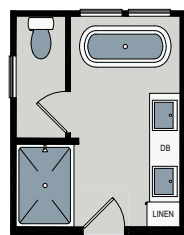


OPTIONAL BATHS

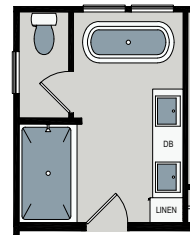
DORSET | ATMOSPHERE



Alternate Primary Bath One
w/ 42"x72" Shower



Alternate Primary Bath Two
w/ 42"x60" Shower &
Freestanding Tub



Alternate Primary Bath Three
w/ 42"x72" Shower &
Freestanding Tub

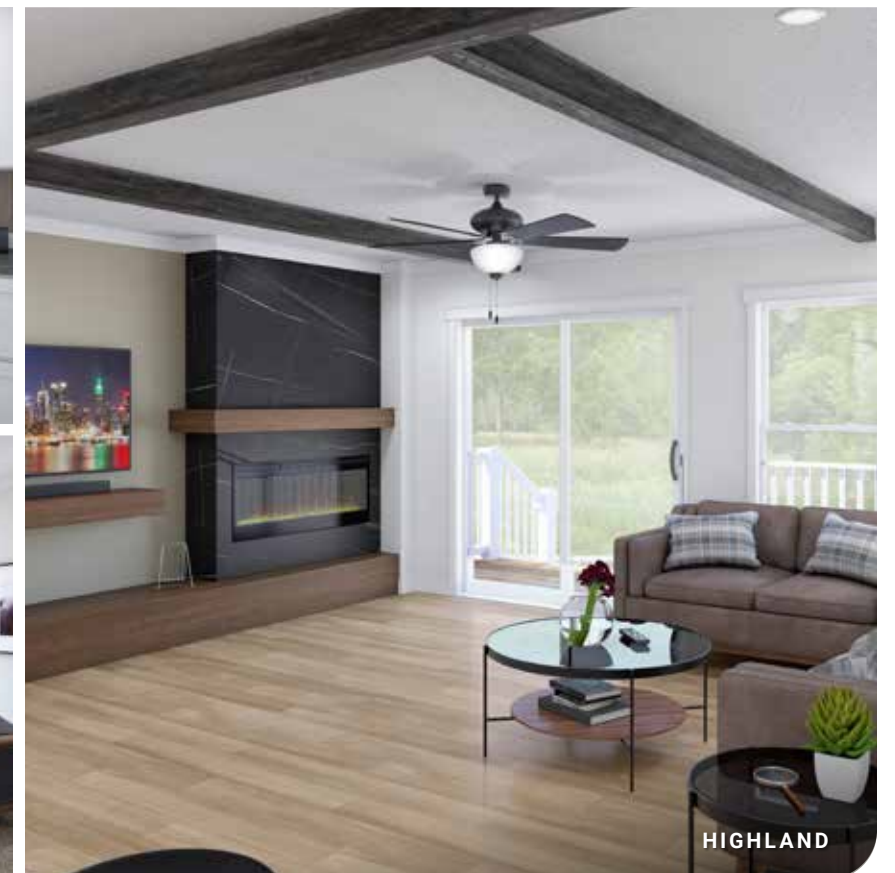
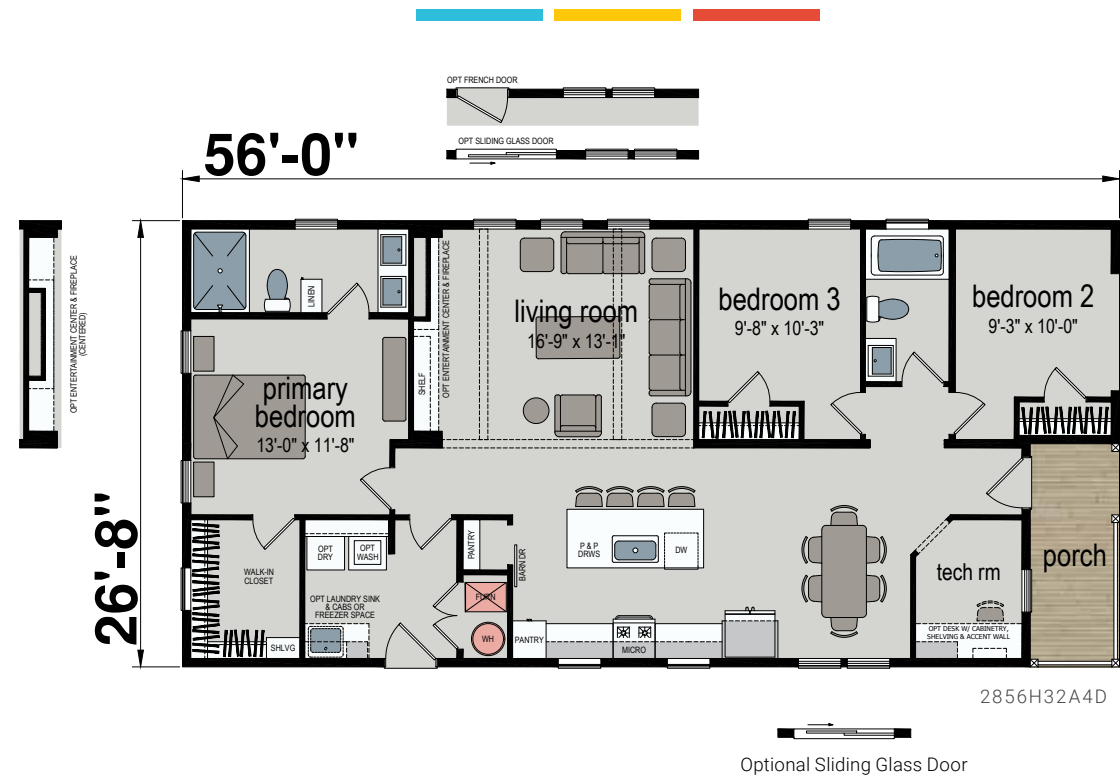


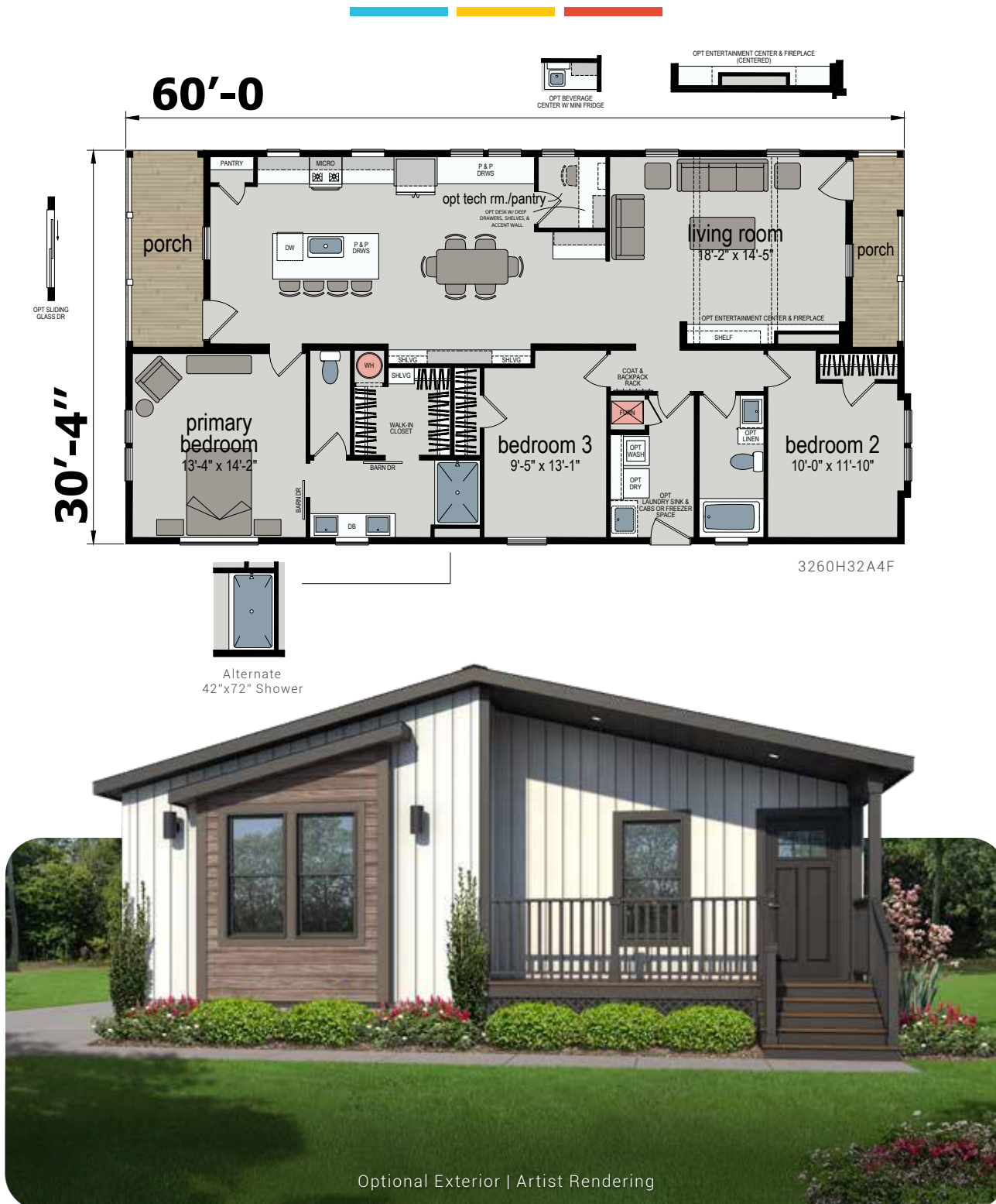
ATMOSPHERE

ALTITUDE™

HIGHLAND 1426

Three Bed | Two Bath | 1,426 Sq. Ft.





- Modern Exterior Elevation with Woodgrain Cladding Accent
- Exterior Package with Black Entry Door and Black Windows for Distinctive Curb Appeal
- Expansive Kitchen with Full Pantry, Tile Backsplash and Full Overlay
- Stainless Steel Whirlpool® Appliances, Including Dishwasher and Built-in Microwave
- Designer Sink and Faucet with Upgraded Lighting in Kitchen
- Spacious Primary Bedroom with En Suite Bath Including Walk-in Shower, Teak Shower Seat and Black Faucets
- Walk-in Closet for Primary Suite with Open Shelving for Extra Storage
- Fiberglass Tub Shower with Framed Vanity Mirror and Black Faucets in Secondary Bath
- Office/Tech Room
- Unique Offset Dormer
- Smart Thermostat
- Ceiling Fan in Open-Concept Living Room
- High-Quality Vinyl Flooring in Common Areas with Carpet in Bedrooms
- Professionally Curated Colors and Materials Throughout
- Rheem® Water Heater
- ENERGY STAR® Standard

Due to continuous product development and improvement, prices, specifications, and materials are subject to change without notice or obligation. Square footage and other dimensions are approximate. Exterior images may be artist renderings and are not intended to be an accurate representation of the home. Renderings, photos and floor plans may be shown with optional features or third-party additions.



33302 Valle Road, Suite 200, San Juan Capistrano, CA 92675 | (949) 441-5111